

# Plane flanger

000600.xxx

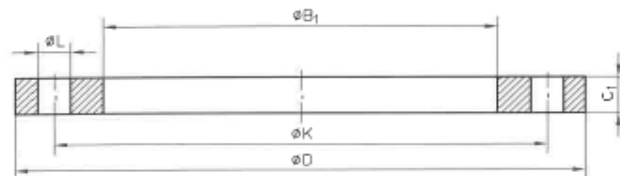
Produceret iht. EN 1092-1, Type 01

Pakflade Type A (se nedenfor)

Kvalitet: P250GH iht. EN 10222

Tryktrin: PN 6

Kan leveres med certf. iht. EN 10204/3.1, samt PED



VVS nr.	DN	A	D		K		L		B1		C1		Kg/stk.
000600021	15	21,3	80	+/-2,0	55	+/-1,0	11	+1,0/0	22,0	+0,5/0	12	+1,0/-1,3	0,40
000600027	20	26,9	90		65		11		27,5		14		0,59
000600034	25	33,7	100		75		11		34,5		14		0,72
000600042	32	42,4	120		90		14		43,5		16		1,16
000600048	40	48,3	130		100		14		49,5		16		1,35
000600060	50	60,3	140		110		14		61,5		16		1,48
000600076	65	76,1	160		130		14		77,5		16		1,86
000600089	80	88,9	190		150		18		90,5		18		2,95
000600108	100	108	210		170		18		109,6		18		3,46
000600114	100	114,3	210		170		18		116,0		18		3,26
000600133	125	133	240		200		18		134,8	+1,0/0	20	+/-1,5	4,60
000600140	125	139,7	240		200		18		141,5		20		4,31
000600159	150	159	265		225		18		161,1		20		5,22
000600168	150	168,3	265		225		18		170,5		20		4,76
000600194	175	193,7	295		255		18		196,0		20		5,67
000600219	200	219,1	320	+/-3,0	280		18		221,5		22		6,88
000600273	250	273	375		335		18		276,5		24		8,92
000600324	300	323,9	440		395		22		327,5		24		11,90
000600356	350	355,6	490		445		22		359,5		26		16,80
000600406	400	406,4	540		495		22		411,0		28		19,80
000600457	450	457	595		550		22		462,0	+1,5/0	30		24,60
000600508	500	508	645		600		22		513,5		30		26,40
000600610	600	610	755	+/-5,0	705		26		616,5		32		34,80
000600711	700	711	860		810		26		716,0	+3,0/0	40		51,97
000600813	800	813	975		920	+/-1,5	30	+2,5/0	819,0		44		70,06
000600914	900	914	1075		1020		30		920,0		48		86,00
000600950	1000	1016	1175		1120		30		1020,0		52	+/-2,0	99,69



## Vejledende boltediagram

VVS nr.	DN	DIM	Vejl. Bolte-str.	Ant al hul	Varenr. Elgalv. Bolt	Varenr. Elgalv. Møtrik	Varenr. Elgalv. Skive	Varenr. Elgalv. Boltesæt 4 bolte + 4 møtrikker + 8 skiver	Varenr. Varmgalv. Bolt	Varenr. Varmgalv. Møtrik	Varenr. Varmgalv. Skive	Varenr. Varmgalv. Boltesæt 4 bolte + 4 møtrikker + 8 skiver
000600021	15	21,3	M10x45	4	525304101	525305382	525315907		525304427	525305406	525315930	
000600027	20	26,9	M10x50	4	525304102	525305382	525315907		525304428	525305406	525315930	
000600034	25	33,7	M10x50	4	525304102	525305382	525315907		525304428	525305406	525315930	
000600042	32	42,4	M12x60	4	525304121	525305384	525315909	525326916	525304438	525305407	525315931	525326922
000600048	40	48,3	M12x60	4	525304121	525305384	525315909	525326916	525304438	525305407	525315931	525326922
000600060	50	60,3	M12x60	4	525304121	525305384	525315909	525326916	525304438	525305407	525315931	525326922
000600076	65	76,1	M12x60	4	525304121	525305384	525315909	525326916	525304438	525305407	525315931	525326922
000600089	80	88,9	M16x65	4	525304148	525305388	525315913	525326917	525304453	525305408	525315933	525326923
000600108	100	108	M16x65	4	525304148	525305388	525315913	525326917	525304453	525305408	525315933	525326923
000600114	100	114,3	M16x65	4	525304148	525305388	525315913	525326917	525304453	525305408	525315933	525326923
000600133	125	133	M16x65	8	525304148	525305388	525315913	525326917	525304453	525305408	525315933	525326923
000600140	125	139,7	M16x65	8	525304148	525305388	525315913	525326917	525304453	525305408	525315933	525326923
000600159	150	159	M16x65	8	525304148	525305388	525315913	525326917	525304453	525305408	525315933	525326923
000600168	150	168,3	M16x65	8	525304148	525305388	525315913	525326917	525304453	525305408	525315933	525326923
000600194	175	193,7	M16x65	8	525304148	525305388	525315913	525326917	525304453	525305408	525315933	525326923
000600219	200	219,1	M16x70	8	525304149	525305388	525315913	525326918	525304454	525305408	525315933	525326924
000600273	250	273	M16x75	12	525304150	525305388	525315913	525326918	525304455	525305408	525315933	525326924
000600324	300	323,9	M20x80	12	525304169	525305391	525315916	525326920	525304468	525305409	525315935	525326926
000600356	350	355,6	M20x80	12	525304169	525305391	525315916	525326920	525304468	525305409	525315935	525326926
000600406	400	406,4	M20x90	16	525304170	525305391	525315916		525304469	525305409	525315935	
000600457	450	457	M20x90	16	525304170	525305391	525315916		525304469	525305409	525315935	
000600508	500	508	M20x90	20	525304170	525305391	525315916		525304469	525305409	525315935	
000600610	600	610	M24x100	20	525304179	525305394	525315918		525304477	525305410	525315937	
000600711	700	711	M24x120	24	525304181	525305394	525315918		525304478	525305410	525315937	
000600813	800	813	M27x130	24	spørg BD	525305395	525315919		spørg BD	525305413	525315938	
000600914	900	914	M27x140	24	spørg BD	525305395	525315919		spørg BD	525305413	525315938	
000600950	1000	1016	M27x140	28	spørg BD	525305395	525315919		spørg BD	525305413	525315938	

### Bemærkning

Bolt længde er vejledende, og udregnet under følgende forudsætninger.

To flanger spændt sammen med:

1 stk. bolt, 1 stk. møtrik, 2 stk. skiver, 1 stk. 2mm pakning, 5-10 mm overmål



# Plane flanger

000600.xxx

## Pakflade

Table 2 — Surface finish for jointing faces

Facing types	Method of machining	Radius of tool nose mm	$R_a^a$ μm		$R_z^a$ μm	
			min.	max.	min.	max.
A, B1 <sup>b</sup> , E, F	Turning <sup>c</sup>	1,0	3,2	12,5	12,5	50
B2 <sup>b</sup> , C, D, G, H	Turning <sup>c</sup>	—	0,8	3,2	3,2	12,5

NOTE For certain applications, e.g. low temperature gases, it may be necessary to stipulate closer control to the surface finish.

<sup>a</sup>  $R_a$  and  $R_z$  are defined in EN ISO 4287.

<sup>b</sup> Types B1 and B2 are raised face (type B) flanges with different specified surface roughness values.  
B1 : Standard facing for all PN numbers.  
B2 : Only if agreed between the purchaser and the supplier.

<sup>c</sup> The term 'turning' includes any method of machine operation producing either serrated concentric or serrated spiral grooves.



Type A  
Flat face