

Plane flanger

000611.xxx

Produceret iht. EN 1092-1, Type 05

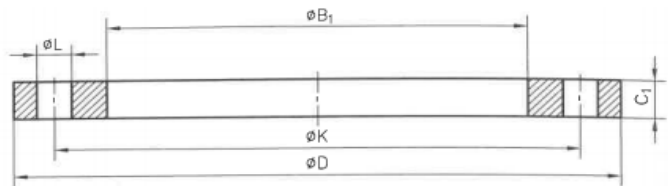
Pakflade Type A (se nedenfor)

Kvalitet: P250GH iht. EN 10222

Tryktrin: DN15-DN40: PN 40

DN50-DN175: PN 16

>DN200: PN 10



Kan leveres med certf. iht. EN 10204/3.1, samt PED

VVS nr.	DN	A	D		K		L		B1		C1		Kg/ stk.	
000611017	15	21,3	90	+/- 2,0	60	+/-1,0	14	+1,0/0	18,0	+0,5/0	14	+1,0/-1,3	0,60	
000611021	15	21,3	95		65		14		22,0		14		0,67	
000611027	20	26,9	105		75		14		27,5		16		0,94	
000611034	25	33,7	115		85		14		34,5		16		1,11	
000611038	32	38	140		100		18		39,0		16		1,66	
000611042	32	42,4	140		100		18		43,5		18		1,85	
000611048	40	48,3	150		110		18		49,5		18		2,08	
000611060	50	60,3	165		125		18		61,5		20		+/-1,5	2,73
000611076	65	76,1	185		145		18		77,5		20			3,16
000611077	65	76,1	185		145		18		77,5		20			3,16
000611089	80	88,9	200		160		18		90,5		20			3,60
000611108	100	108	220		180		18		109,6		22			4,58
000611114	100	114,3	220		180		18		116,0		22			4,39
000611140	125	139,7	250		210		18		141,5		+1/0		22	5,41
000611159	150	159	285	240	22	161,1	24	7,61						
000611168	150	168,3	285	240	22	170,5	24	7,14						
000611194	175	193,7	315	270	22	196,1	24	8,45						
000611219	200	219,1	340	+/- 3,0	295	22	221,5	24	9,27					
000611273	250	273	395		350	22	276,5	26	11,80					
000611324	300	323,9	445		400	22	327,5	26	13,60					
000611356	350	355,6	505		460	22	359,5	30	21,80					
000611406	400	406,4	565		515	26	411,0	32	27,50					
000611457	450	457	615		565	26	462,0	+1,5/0	36	33,60				
000611508	500	508	670		620	26	513,5		38	40,50				
000611610	600	610	780		+/- 5,0	725	+/-1,5		30	+2,5/0	616,5	42	54,50	



Plane flanger

000611.xxx

Vejledende boltediagram

VVS nr.	DN	DIM	Vejl. Bolte-str.	Antal hul	Varenr. Elgalv. Blot	Varenr. Elgalv. Møtrik	Varenr. Elgalv. Skive	Varenr. Elgalv. Boltesæt 4 bolte + 4 møtrikker + 8 skiver	Varenr. Varmgalv. Blot	Varenr. Varmgalv. Møtrik	Varenr. Varmgalv. Skive	Varenr. Varmgalv. Boltesæt 4 bolte + 4 møtrikker + 8 skiver
000611017	15	21,3	M12x50	4	525304119	525305384	525315909		525304436	525305407	525315931	
000611021	15	21,3	M12x50	4	525304119	525305384	525315909		525304436	525305407	525315931	
000611027	20	26,9	M12x60	4	525304121	525305384	525315909	525326916	525304438	525305407	525315931	525326922
000611034	25	33,7	M12x60	4	525304121	525305384	525315909	525326916	525304438	525305407	525315931	525326922
000611038	32	38	M16x60	4	525304147	525305388	525315913	525326916	525304452	525305408	525315933	525326922
000611042	32	42,4	M16x65	4	525304148	525305388	525315913	525326917	525304453	525305408	525315933	525326923
000611048	40	48,3	M16x65	4	525304148	525305388	525315913	525326917	525304453	525305408	525315933	525326923
000611060	50	60,3	M16x65	4	525304148	525305388	525315913	525326917	525304453	525305408	525315933	525326923
000611076	65	76,1	M16x65	4	525304148	525305388	525315913	525326917	525304453	525305408	525315933	525326923
000611077	65	76,1	M16x65	8	525304148	525305388	525315913	525326917	525304453	525305408	525315933	525326923
000611089	80	88,9	M16x65	8	525304148	525305388	525315913	525326917	525304453	525305408	525315933	525326923
000611108	100	108	M16x70	8	525304149	525305388	525315913	525326918	525304454	525305408	525315933	525326924
000611114	100	114,3	M16x70	8	525304149	525305388	525315913	525326918	525304454	525305408	525315933	525326924
000611140	125	139,7	M16x70	8	525304149	525305388	525315913	525326918	525304454	525305408	525315933	525326924
000611159	150	159	M20x80	8	525304169	525305391	525315916	525326920	525304468	525305409	525315935	525326926
000611168	150	168,3	M20x80	8	525304169	525305391	525315916	525326920	525304468	525305409	525315935	525326926
000611194	175	193,7	M20x80	8	525304169	525305391	525315916	525326920	525304468	525305409	525315935	525326926
000611219	200	219,1	M20x80	8	525304169	525305391	525315916	525326920	525304468	525305409	525315935	525326926
000611273	250	273	M20x80	12	525304169	525305391	525315916	525326920	525304468	525305409	525315935	525326926
000611324	300	323,9	M20x80	12	525304169	525305391	525315916	525326920	525304468	525305409	525315935	525326926
000611356	350	355,6	M20x90	16	525304170	525305391	525315916		525304469	525305409	525315935	
000611406	400	406,4	M24x100	16	525304179	525305394	525315918		525304477	525305410	525315937	
000611457	450	457	M24x110	20	525304180	525305394	525315918		525304493	525305410	525315937	
000611508	500	508	M24x110	20	525304180	525305394	525315918		525304493	525305410	525315937	
000611610	600	610	M27x130	20	Spørg BD	525305395	525315919		Spørg BD	525305413	525315938	

Bemærkning

Bolt længde er vejledende, og udregnet under følgende forudsætninger.

To flanger spændt sammen med:

1 stk. bolt, 1 stk. møtrik, 2 stk. skiver, 1 stk. 2mm pakning, 5-10 mm overmål



Plane flanger

000611.xxx

Pakflade

Table 2 — Surface finish for jointing faces

Facing types	Method of machining	Radius of tool nose	R_a^a		R_z^a	
		mm	μm		μm	
		min.	min.	max.	min.	max.
A, B1 ^b , E, F	Turning ^c	1,0	3,2	12,5	12,5	50
B2 ^b , C, D, G, H	Turning ^c	—	0,8	3,2	3,2	12,5

NOTE For certain applications, e.g. low temperature gases, it may be necessary to stipulate closer control to the surface finish.

^a R_a and R_z are defined in EN ISO 4287.

^b Types B1 and B2 are raised face (type B) flanges with different specified surface roughness values.

B1: Standard facing for all PN numbers.

B2: Only if agreed between the purchaser and the supplier.

^c The term 'turning' includes any method of machine operation producing either serrated concentric or serrated spiral grooves.



Type A
Flat face