

## Pipe loop RSL

### Application

Pipe loops are used to fix pipes in stationary fire protection; mainly used for sprinkler systems.

### Technical Data

Material: Steel, galvanised  
Cup nut, galvanised  
Flange nut EN 1661, galvanised

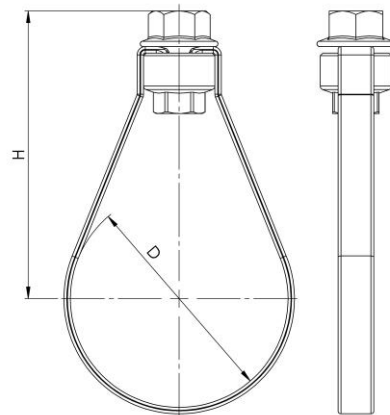
Type	Nominal load [N]
RSL 34 - 49	2000
RSL 60 - 115	3500
RSL 133 - 170	5000
RSL 220	8500



### Approval

All types are VdS (No. G4020036) approved.

Type	OD	Connection	D [mm]	H [mm]	Quantity [pack]
RSL 34	1"	M10	34	65	50
RSL 43	1 ¼"	M10	43	65	50
RSL 49	1 ½"	M10	49	70	50
RSL 60	2"	M10	61	79	50
RSL 76	2 ½"	M10	77	95	25
RSL 90	3"	M10	90	110	25
RSL 110	108	M10	110	140	25
RSL 115	4"	M10	115	140	25
RSL 133	133	M12	135	155	25
RSL 140	5"	M12	142	155	25
RSL 159	159	M12	161	185	25
RSL 170	6"	M12	170	185	25
RSL 220	8"	M16	221	239	10



### Installation

1. Screw the flange nut and the cup nut onto the cut-to-length threaded rod.
3. Firmly screw the threaded rod into a suitable fastening, e.g. trapezoid hanger.
4. Put the Pipe Loop around the pipe.
5. Hook the Pipe Loop with the pipe in it into the cup nut.
6. If necessary, adjust the height by turning the cup nut.
7. Strongly tighten the flange nut while blocking the cup nut with pliers.