

# A BIS Metal Pipe Clamps with Lining

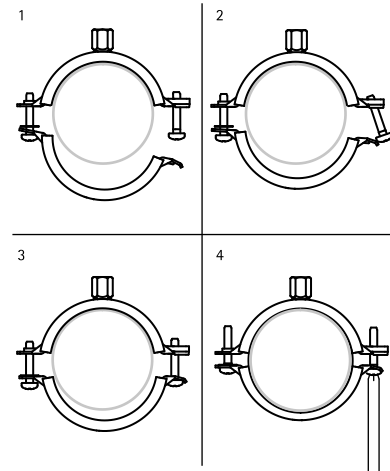


## KSB2 Clamp

for steel, copper, cast iron and plastic (multilayer) pipe 10 - 225 mm

M8/10

(A 05 116)



### Features and benefits

- two-screw clamp
- quick closing mechanism for easy locking of the clamp with one hand
- full range from 10 to 225 mm
- material: steel
- zinc plated
- age resistant lining
- noise insulating lining, EPDM rubber, black and green
- sound insulating lining according to DIN 4109

Part No.	D (mm)	D (°)	DN	G	B (mm)	H (mm)	h (mm)	b x s (mm)	F <sub>a,z</sub> (N)	Pack 1
339 6 014	10 - 14	1/8 - 1/4	-	M8/10	59	42	30	20 x 1.25	-	100
339 6 019	15 - 19	3/8	-	M8/10	63	46	31	20 x 1.25	-	100
339 6 023	20 - 23	1/2	-	M8/10	68	51	33	20 x 1.25	-	100
339 6 028	25 - 28	3/4	-	M8/10	74	57	36	20 x 1.25	-	100
339 6 035	31 - 35	1	-	M8/10	80	63	39	20 x 1.25	-	100
339 6 039	36 - 39	-	-	M8/10	84	67	41	20 x 1.25	-	100
339 6 045	40 - 45	1 1/4	-	M8/10	91	74	45	20 x 1.25	-	100
339 6 052	48 - 52	1 1/2	-	M8/10	97	80	48	20 x 1.25	-	50
339 6 058	54 - 58	-	-	M8/10	104	87	51	20 x 1.25	-	50
339 6 064	60 - 64	2	-	M8/10	109	92	54	20 x 1.25	-	50
339 6 070	66 - 70	-	-	M8/10	118	100	58	20 x 1.50	-	50
339 6 079	75 - 79	2 1/2	-	M8/10	125	108	62	20 x 1.50	-	50
339 6 083	80 - 83	-	-	M8/10	132	114	65	20 x 1.50	-	50
339 6 091	88 - 91	3	-	M8/10	142	123	70	23 x 2.00	-	50
339 6 105	100 - 105	-	-	M8/10	155	137	77	23 x 2.00	-	50
339 6 115	108 - 115	4	-	M8/10	164	145	81	23 x 2.00	-	25
339 6 130	125 - 130	-	-	M8/10	181	162	89	23 x 2.00	-	25
339 6 140	133 - 140	5	-	M8/10	189	171	94	23 x 2.00	-	25
339 6 160	152 - 160	-	-	M8/10	209	190	102	23 x 2.00	-	25
339 6 169	165 - 169	6	-	M8/10	225	203	111	25 x 2.50	-	20
339 6 180	176 - 180	-	-	M8/10	238	209	117		-	15
339 6 200	192 - 200	-	-	M8/10	257	238	127		-	15
339 6 210	205 - 210	-	-	M8/10	269	249	133		-	10
339 6 225	219 - 225	-	-	M8/10	283	265	140		-	10

