

## Backing flange PVC-U metric

### Model:

- For socket systems metric and BS
- Connecting dimension: ISO 7005, EN 1092, BS 4504, DIN 2501
- **Bolt circle PN 10**
- Maximum medium- or ambient temperature 45 °C

<sup>1)</sup> Connecting dimension: ISO 2536, bolt circle acc. DN125, suitable for flange adaptor d125/ DN100

<sup>2)</sup> Connecting dimension: ISO 2536, bolt circle acc. DN225, suitable for flange adaptor d250/ DN250

<sup>3)</sup> Not for BS

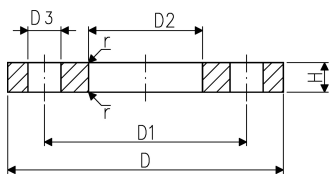
AL: number of holes

	d (mm)	Size (inch)	DN (mm)	PN (bar)	Code	SP	Weight (kg)
	16	¾	10	10	721 700 005	100	0.053
	20	½	15	10	721 700 006	90	0.067
	25	¾	20	10	721 700 007	50	0.092
	32	1	25	10	721 700 008	40	0.133
	40	1 ¼	32	10	721 700 009	25	0.198
	50	1 ½	40	10	721 700 010	20	0.247
	63	2	50	10	721 700 011	30	0.312
	75	2 ½	65	10	721 700 012	25	0.376
	90	3	80	10	721 700 013	20	0.464
3	110	4	100	10	721 700 014	30	0.543
1	125	4 ½	125	10	721 700 015	12	0.904
	140	5	125	10	721 700 016	12	0.758
	160	6	150	10	721 700 017	5	1.009
	200	7	200	10	721 700 019	8	1.669
	225	8	200	10	721 700 020	8	1.377
	250	9	250	6	721 700 021	1	2.376
2	250	9	225	6	721 700 136	1	1.800
	280	10	250	6	721 700 137	1	1.746
	315	12	300	6	721 700 138	1	2.349
	355	14	350	6	721 700 139	1	3.485
	400	16	400	6	721 700 140	1	4.526

	d (mm)	D (mm)	D1 (mm)	D2 (mm)	D3 (mm)	H (mm)	r (mm)	AL	SC
	16	90	60	23	14	10	1	4	M12
	20	95	65	28	14	11	1	4	M12
	25	105	75	34	14	12	2	4	M12
	32	115	85	42	14	14	2	4	M12
	40	140	100	51	18	15	2	4	M16
	50	150	110	62	18	16	2	4	M16
	63	165	125	78	18	18	3	4	M16
	75	185	145	92	18	19	3	4	M16
	90	200	160	110	18	20	3	8	M16
3	110	220	180	133	18	22	3	8	M16
1	125	250	210	150	18	26	5	8	M16
	140	250	210	167	18	26	4	8	M16
	160	285	240	190	22	28	4	8	M20
	200	340	295	226	22	32	4	8	M20
	225	340	295	250	22	32	4	8	M20
	250	395	350	277	22	36	4	12	M20
2	250	370	325	277	22	36	4	8	M20

# Data sheet

valid from: 5/3/16



d	D	D1	D2	D3	H	r	AL	SC
(mm)	(mm)	(mm)	(mm)	(mm)	(mm)	(mm)		
280	395	350	310	22	36	4	12	M20
315	445	400	348	22	36	4	12	M20
355	505	460	388	22	38	5	16	M20
400	565	515	442	26	42	5	16	M24

The technical data are not binding. They neither constitute expressly warranted characteristics nor guaranteed properties nor a guaranteed durability. They are subject to modification. Our General Terms of Sale apply.

Georg Fischer Piping Systems Ltd, Postfach, CH-8201 Schaffhausen/Switzerland

Phone +41 -(0)52-631 1111

e-mail: [info.ps@georgfischer.com](mailto:info.ps@georgfischer.com)

Internet: <http://www.gfps.com>