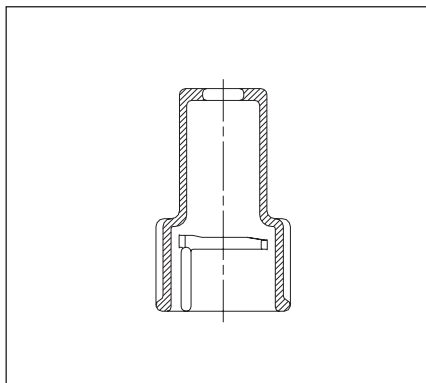


No. 9640

Protective Cover

for extension spindles with bayonet connection (old version of service valves)

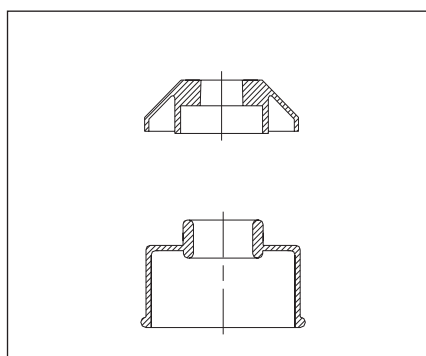


Weight kg	
0,08	●

No. 9651

Sealing cap

for all rigid type extension spindles



DN	No. 9650	No. 9651
3/4" - 2"	●	●
50 - 200	●	●
250 - 600	●	●

No. 9650

Cap

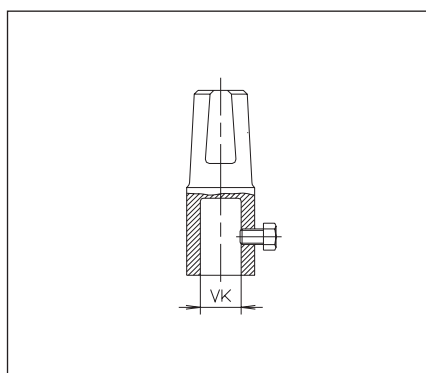
for all rigid type extension spindles

No. 8670

Spindle Head

for rigid extension spindles for Elypso Valves

of ductile iron
with set bolt



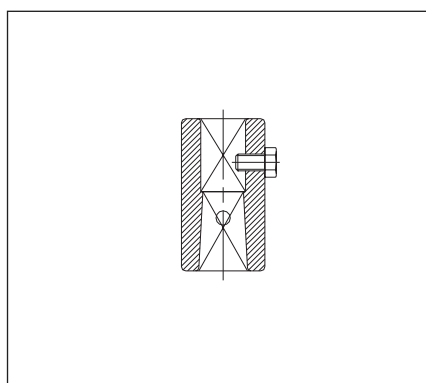
DN	Square head dimension	Weight kg	
50 - 200	20,5	0,65	●
250 - 600	25,5	0,68	●

No. 8660

Spindle Coupling

for all extension spindles

of ductile iron
with set bolt



DN	Weight kg	
3/4" - 2"	0,15	●
50	0,30	●
65	0,30	●
80	0,40	●
100 - 150	0,40	●
200	0,60	●
250 - 350	0,80	●
400 - 500	0,80	●
500 - 600	1,44	●

Spare Parts

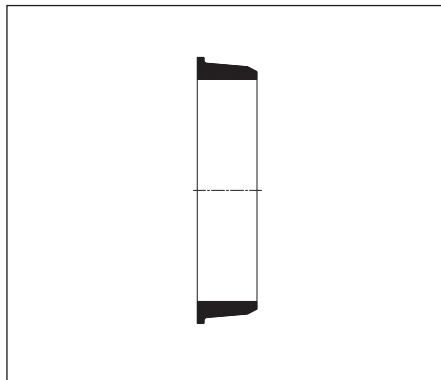
No. 7500

Sleeve Gasket

for Spar Flange

No. 0101, 0102, 1001, 1002

Please specify type of pipe and outside diameter



DN	Weight kg	
50	0,07	●
60	0,11	●
65	0,11	●
80	0,14	●
100	0,18	●
125	0,23	●
150	0,30	●
200	0,50	●
250	0,60	●
300	0,90	●
400	1,70	●

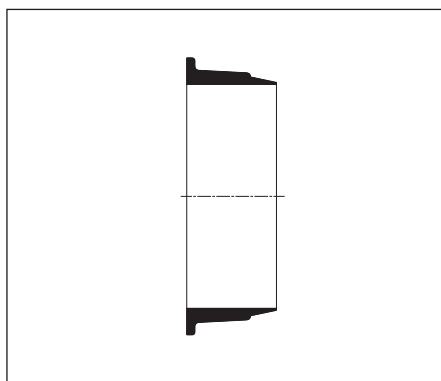
No. 7510

Sleeve Gasket

for Double Chamber Flange Adaptor

No. 7101, 7102, 7103, 7402

Please specify type of pipe and outside diameter



DN	Weight kg	
40	0,07	●
50	0,09	●
65	0,14	●
80	0,17	●
100	0,26	●
125	0,30	●
150	0,40	●
200	0,60	●
250	0,85	●
300	1,20	●
400	2,20	●

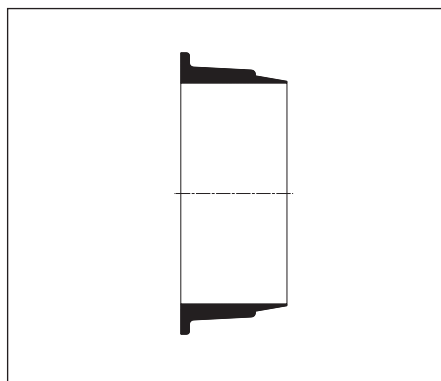
No. 7524

Sleeve Gasket

for Double Chamber Flange Adaptor

No. 5600, 5630 (PVC)

Please specify outside diameter of pipe



DN	Pipe Ø mm	Weight kg	
50	63	0,10	●
65	75	0,13	●
80	90	0,17	●
100	110	0,20	●
150	160	0,40	●
200	200	0,70	●
200	225	0,85	●
250	250	1,30	●
250	280	1,30	●
300	315	1,50	●
400	400	2,80	●

No. 7532

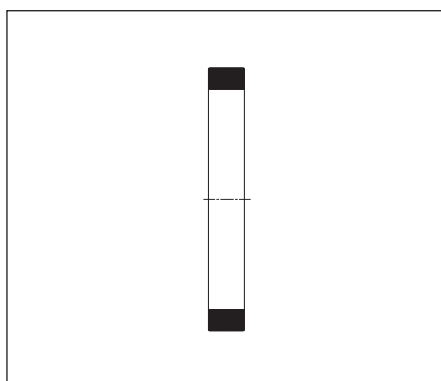
Sleeve Gasket

for Flange Adaptor, restraint

No. 7602 (cast iron)

Please specify outside diameter of pipe

The gasket has grip ring segments glued to it



DN	Pipe Ø mm	Weight kg	
50	66	0,14	●
60	77	0,14	●
65	82	0,16	●
80	98	0,25	●
100	118	0,30	●
125	144	0,40	●
150	170	0,70	●
200	222	1,30	●
250	274	1,70	●
300	326	2,00	●