

UNIVERSAL PIPE SADDLE

For steel, ductile iron and asbestos cement pipes



Design features

- Compact saddle body
- Favorable angle of contact
- Flexible padded wrap around strap for easy installation
- Optimum force transfer of the strap screw connection through strap and cylinder disks as bolt contact area
- The saddle seal is moulded to fit the pipe diameter and is prefixed in the saddle body
- All internal threads are fitted with a corrosion protection ring to prevent corrosion and incrustations
- Version for potential equalization ("grounding") on request
- No. 3500 / 3510 for drilling without pressure

Material | Technical features

- 1 **Saddle body** made of ductile iron, epoxy powder-coated
- 2 **Saddle seal** made of elastomer
- 3 **Nuts** free lying, (Molybdenum-coated)
No. 3500 / 3530: made of stainless steel spherical bearings
No. 3510: on stainless steel cylinder disk
- 4 **screws** M 16 - stainless steel
- 4 **Strap** made of passivated stainless steel, strength 1,5 with insulating elastomer **rubber padding**
- 5 **Corrosion protection ring** made of elastomer

Suitable accessories

Drilling machine: No. 5800, No 5805, No 5807

No. 3500 Pipe saddle / internal thread

No. 3510 Pipe saddle / flange

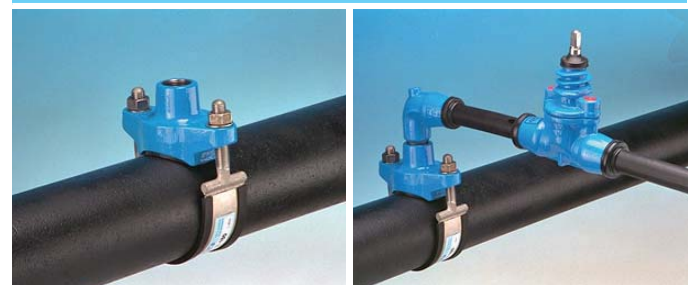
No. 3530 Saddle without drilled connection hole



Order no.	Internal thread DN	MOP (PN)	Dimensions/DN													
			50	65	80	100	125	150	200	250	300	350	400	450	500	600
3500	1"	16														
	1¼"															
	1½"															
	2"															
	2½"															
3510	3"															
	40															
	50															
	80															
3530	100															
	150															

Please specify pipe material on order

Application examples



E. Hawle Armaturenwerke GmbH 4840 Vöcklabruck - Austria - Wagrainstraße 13
Tel.: +43 (0) 7672 72576 0 - Fax.: +43 (0) 7672 78464 - E-Mail: hawle@hawle.at - www.hawle.com

I 2/1

UNIVERSAL PIPE SADDLE

For steel, ductile iron and asbestos cement pipes

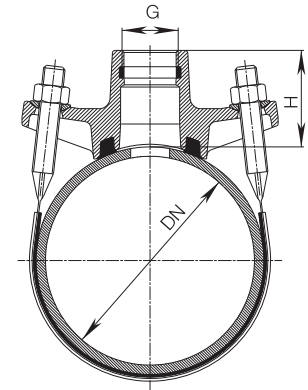


Thread outlet G		Dimension/DN													
		50	65	80	100	125	150	200	250	300	350	400	450	500	600
1"	Weight	2,30	2,20	2,40	2,50	3,30	3,40	3,90	4,60	4,70					
	H	64	64	61	61	78	78	86	89	89					
1¼"	Weight	2,30	2,20	2,40	2,50	3,40	3,50	4,10	4,60	4,70					
	H	64	64	61	61	78	78	86	89	89					
1½"	Weight			2,40	2,50	3,60	3,60	4,20	4,80	4,90					
	H			57	57	78	78	86	89	89					
2"	Weight			2,45	2,50	3,80	3,90	4,40	5,00	5,10	7,30	7,60	8,00	8,20	8,80
	H			57	57	78	78	86	89	89	74*	74*	74*	74*	74*
2½"	Weight							5,70							
	H							56*							
3"	Weight						5,40		5,90						
	H						54*		56*						

*Version with double strap

No. 3500 saddle clamp

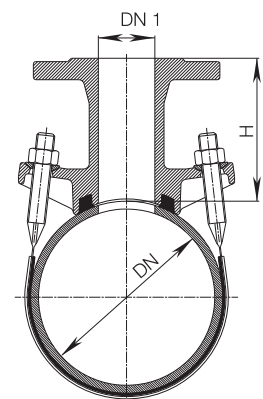
With internal threaded outlet ISO 228, in conjunction with shut-off adapter No. 3720 for under pressure drilling



Flange outlet DN 1		Dimension/DN													
		80	100	125	150	200	250	300	350	400	450	500	600		
40	Weight		6,60	6,80	6,90	7,70									
	H		114	126	126	145									
50	Weight	6,60	6,60	6,80	6,90	7,70	7,90	8,00							
	H	114	114	126	126	145	153	153							
80	Weight				9,50	10,30	11,50	11,80	14,50	14,90	15,70	16,50	17,30		
	H				135	150	147	147	146	146	146	146	146		
100	Weight				11,10	11,80	12,50	12,70	15,80	16,00	16,90	17,60	18,30		
	H				140	155	158	158	165	165	165	165	165		
150	Weight									24,00	29,40	30,50	31,90		
	H									186	186	186	186		

No. 3510 saddle clamp

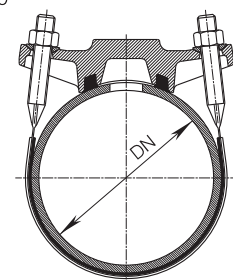
With flanged outlet - EN 1092-2; all models have a double strap, flange drilling to EN 1092-2 | PN 16, larger DN on request



Dimension/DN	65	80	100	125	150	200	250	300	350	600
Weight	2,60	2,70	2,90	3,50	3,60	4,30	4,80	4,90	6,50	10,00

No. 3530 pipe saddle without drilled hole

Suitable for covering drill holes up to max. Ø40



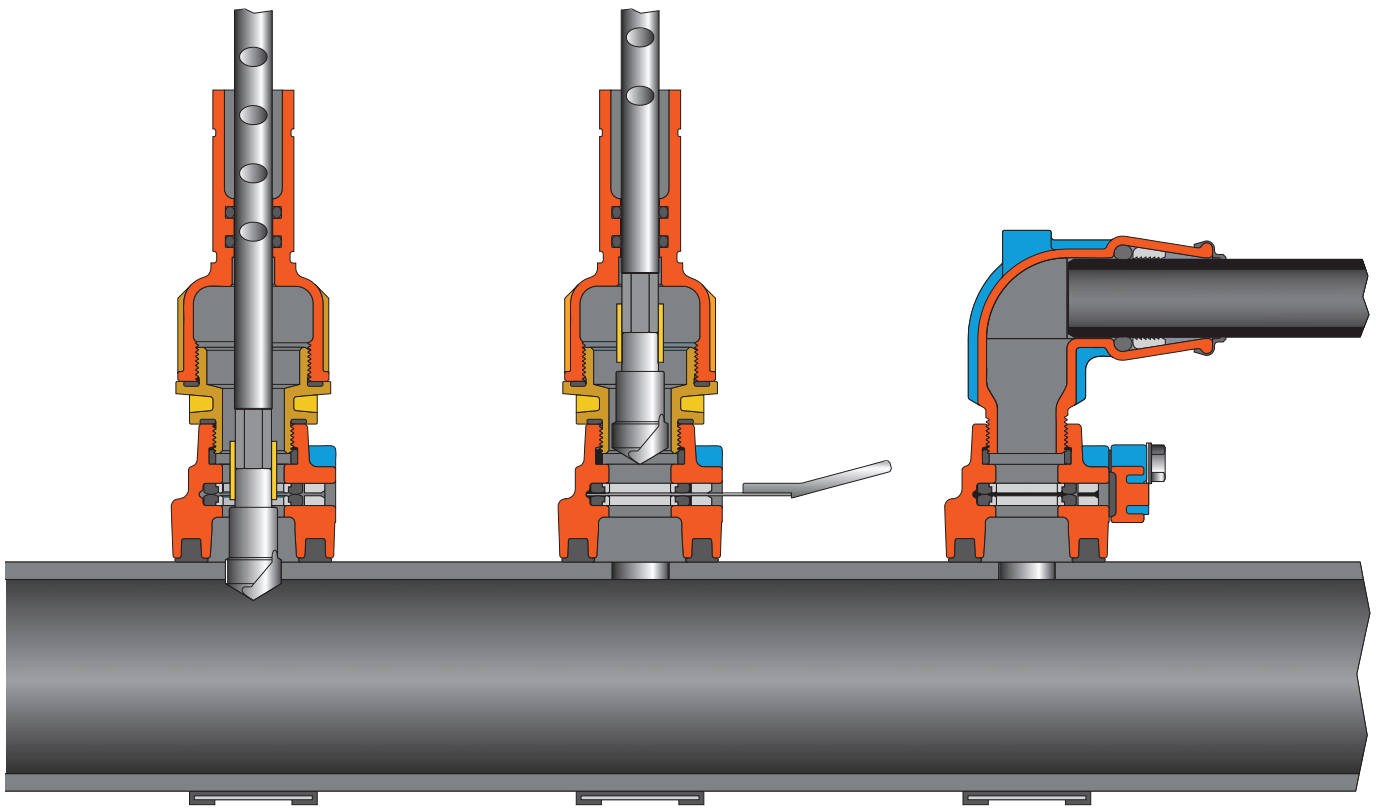
I 2/2



E. Hawle Armaturenwerke GmbH 4840 Vöcklabruck - Austria - Wagrainstraße 13
Tel.: +43 (0) 7672 72576 0 - Fax.: +43 (0) 7672 78464 - E-Mail: hawle@hawle.at - www.hawle.com

SADDLES

Drilling instructions under pressure



1 Drilling:

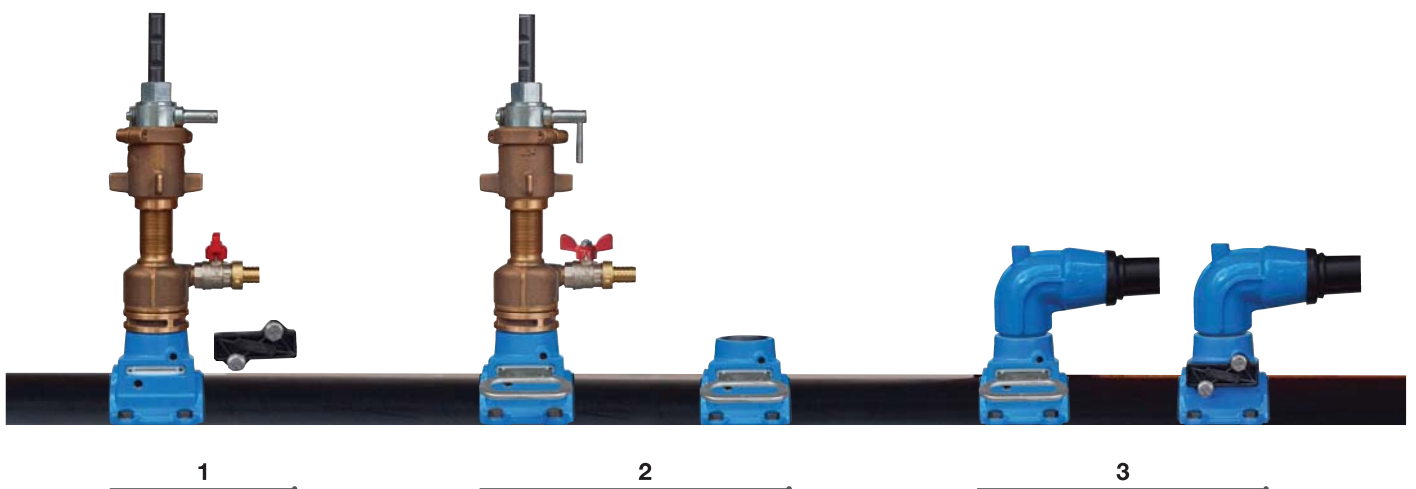
Drill the pipe with a drilling machine No. 5800, No. 5805 (Hawle drilling machine see "Tools") - retract the drill

2 Shut-off:

Lubricate No. 3443 the saddle
blade (No. 8401) - shut-off

3 Connection:

Connect the pipe - remove saddle
blade - cover must be replaced



1

2

3



E. Hawle Armaturenwerke GmbH 4840 Vöcklabruck - Austria - Wagrainner Straße 13
Tel.: +43 (0) 7672 72576 0 - Fax.: +43 (0) 7672 78464 - E-Mail: hawle@hawle.at - www.hawle.com

I 3/1

UNIVERSAL SHUT-OFF SADDLE

For steel, ductile iron and asbestos cement pipes



Design features

- For under pressure drilling
- Can be pressure tested from both directions
- Solid body
- Flexible padded wrap around strap for easy installation
- Favorable angle of contact
- Optimum force transfer of the strap screw connection through strap and cylinder disks as bolt contact area
- The saddle seal is moulded to fit the pipe diameter and is prefixed in the saddle body
- All internal threads are fitted with a corrosion protection ring to prevent corrosion and incrustations

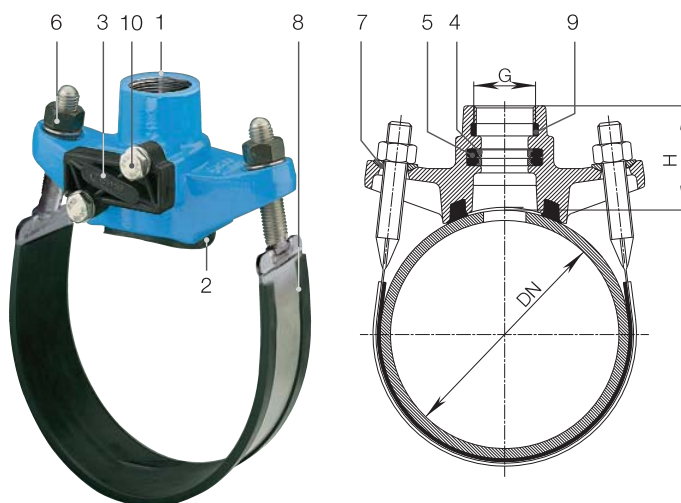
Material | Technical features

- Saddle body** made of ductile iron, epoxy powder-coated
- Saddle seal** and **seal** for intermediate shut-off made of elastomer
- Cover** made of POM, fiber glass reinforced (with rubber seal)
- O-ring carrier** made of POM
- Nuts** made of stainless steel (Molybdenum-coated)
- Ball disc** made of stainless steel
- Strap** of passivated stainless steel, strength 1,5 with insulating elastomer **rubber padding**
- Corrosion protection ring** made of elastomer
- Hexagonal screws** and **washers** made of stainless steel
 - Drilling instructions (see page I 3/1)

Suitable accessories

- Drilling machine:** No. 5800, No. 5805
Saddle blade No. 8401

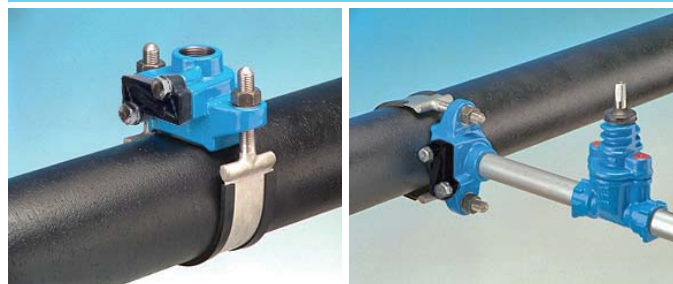
No. 3800



Order No.	Internal thread ISO 228	MOP (PN)	Dimension/DN													
			50	65	80	100	125	150	200	250	300	350	400	450	500	600
3800	1"	16														
	1 1/4"															
	1 1/2"															
	2"															

Please specify pipe material on order

Application examples



Order No.	Internal thread ISO 228 G		Dimension/DN													
			50	65	80	100	125	150	200	250	300	350	400	450	500	600
3800	1"	Weight	2,10	2,10	2,10	2,70	3,10	3,20	4,00	4,60	4,70	7,00			8,00	8,60
		H	67	68	69	69	70	70	80	82	82	78			78	78
	1 1/4"	Weight	2,10	2,10	2,70	2,70	2,75	3,30	4,10	4,70	4,70				8,00	
		H	70	71	72	72	73	73	80	82	82				78	
	1 1/2"	Weight			3,00	3,00	3,60	3,70	4,30	4,90	4,90	7,00	7,40		8,10	9,00
		H			73	73	74	74	80	82	82	78	78		78	78
	2"	Weight			3,10	3,10	3,00	3,80	4,60	5,30	5,40	7,70	8,00	8,30	8,60	9,00
		H			78	78	78	78	81	83	83	78	78	78	78	78

I 3/2



E. Hawle Armaturenwerke GmbH 4840 Vöcklabruck - Austria - Wagrainner Straße 13
 Tel.: +43 (0) 7672 72576 0 - Fax.: +43 (0) 7672 78464 - E-Mail: hawle@hawle.at - www.hawle.com

STRAP

For Hawle pipe saddles for steel, cast iron and asbestos cement pipes



Design features

No. 3111

- Including ball discs and nuts
- Max. tightening torque 100 Nm
- Made of stainless steel, passivated
- Rubber cover made of elastomer



Dimension DN	Suitable for pipe type			Markings					
	Steel	Cast iron	AZ	Ø-Diameter range of strap	Control dimension „L”	DN	Pipe type		
*50				60 - 70	344	50	ST	G	AZ
*65				70 - 82	374	65	ST	G	AZ
*80				89 - 108	410	80	ST	G	AZ
*100				102 - 130	455	100	ST	G	AZ
*125				132 - 158	520	125	ST	G	AZ
*150				159 - 185	595	150	ST	G	AZ
175				185 - 210	685	175	ST	G	
200				210 - 235	760	200	ST	G	
*200				219 - 244	785	200		G	AZ
*250				264 - 288	905	250	ST	G	
250				288 - 310	975	250			AZ
*300				316 - 340	1055	300	ST	G	
300				335 - 360	1130	300			AZ
*350				355 - 380	1155	350	ST	G	
350				390 - 410	1250	350			AZ
400				406 - 429	1300	400	ST		
*400				415 - 440	1325	400	ST	G	
400				450 - 475	1425	400			AZ
*450				467 - 485	1480	400	ST	G	
450				496 - 520	1570	450			AZ
*500				518 - 535	1630	450	ST	G	
500				578 - 600	1810	500			AZ
*600				620 - 640	1945	600	ST	G	
600				680 - 700	2120	600			AZ

* When ordering without reference to the pipe type or without information on the external Ø, the saddle clamps will be delivered with a strap for this labelled Ø range



E. Hawle Armaturenwerke GmbH 4840 Vöcklabruck - Austria - Wagrainner Straße 13
Tel.: +43 (0) 7672 72576 0 - Fax.: +43 (0) 7672 78464 - E-Mail: hawle@hawle.at - www.hawle.com

I 3/3

UNIVERSAL-H SHUT-OFF SADDLE

For steel, ductile iron and asbestos cement pipes



Design features

- For under pressure drilling
- Can be pressure tested from both directions
- Solid body
- Flexible padded wrap around strap for easy installation
- Favorable angle of contact
- Optimal force transition via bolt nut and holding piece
- The saddle seal is moulded to fit the pipe diameter
- All internal threads are fitted with a corrosion protection ring to prevent corrosion and incrustations

Material | Technical features

- Saddle body** made of ductile iron, epoxy powder-coated
- Saddle seal** and **seal** for intermediate shut-off made of elastomer
- Cover** made of POM, fiber glass reinforced (with rubber seal)
- O-ring carrier** made of POM
- Nuts and washers** made of stainless steel (Molybdenum-coated)
- Strap** of passivated stainless steel, strength 1,5 with insulating elastomer **rubber padding**
- Holding piece** made of glasfibre-reinforced PA
- Corrosion protection ring** made of elastomer
- Hexagonal screws and washers** made of stainless steel
 - Drilling instructions (see page I 3/1)

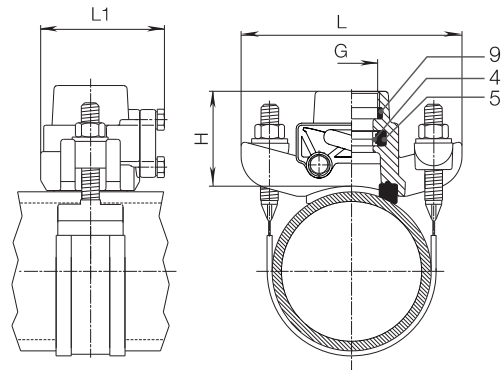
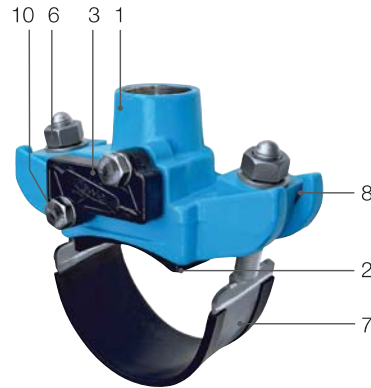
Suitable accessories

- Drilling machine:** No. 5800, No. 5805
Saddle blade No. 8401
Strap: No. 3110 (see page L 4/2)

Universal-H shut-off saddle

No. 3811 Complete

No. 3811G Without strap and saddle seal



Order-No.	MOP (PN)	Internal thread ISO 228 G	Dimension/DN									
			65	80	100	125	150	200	250	300	400	500
3811	16	1"										
		1½"										
3811G		1"	DN 65 - DN 500									
		1½"										

DN	ISO 228	H	L	L1	Weight
65-500	1"	84	200	112	2,60
	1½"				2,80

When ordering, please state DN, pipe Ø and pipe type; weight without strap | strap see page I 3/5



STRAP

For universal-H shut-off saddles



Design features

- Includes holding pieces, washers, nuts
- Max. tightening torque 100 Nm
- Made of passivated stainless steel
- DN 65 to 500
- For all ZAK saddles, ZAK-Hawlinger and universal-H shut-off saddles

Strap with saddle seal No. 3110



When ordering, please state DN, pipe \varnothing and pipe type

Pipe \varnothing	Control dimension „L”	e.g.: for main pipe - DN			Weight
		Steel	Cast iron	AC	
75 - 83	365	65	65		0,73
88 - 97	395	80			0,76
93 - 102	410		80	80	0,76
98 - 105	415			80	0,78
106 - 117	440	100		80	0,80
112 - 122	455	100	100		0,82
123 - 137	485			100	0,85
129 - 139	490	125			0,86
139 - 149	520	125	125		0,88
147 - 160	540	150		125	0,90
156 - 165	560	150		125	0,92
166 - 177	595	150	150		0,95
175 - 185	610			150	0,97
185 - 197	645			150	1,00
200 - 215	685	200			1,03
211 - 223	720	200	200		1,05
216 - 227	735	200	200		1,07
224 - 236	760			200	1,11
235 - 244	785			200	1,13
251 - 263	840			200	1,19
260 - 275	865	250	250		1,20
268 - 280	880	250	250		1,21
273 - 285	905			250	1,25
287 - 298	945			250	1,28
305 - 315	995			250	1,33
323 - 330	1055	300	300		1,39
331 - 343	1075			300	1,41
344 - 356	1110	350		300	1,44
365 - 376	1175	350			1,50
374 - 381	1205		350		1,53
405 - 415	1300			350	1,62
411 - 420	1320	400			1,64
420 - 432	1345		400		1,66
450 - 460	1445			400	1,68
461 - 466	1475			400	1,78
493 - 503	1570			400	1,87
501 - 510	1600	500		450	1,91
541 - 549	1705			450	2,00
556 - 564	1750			500	2,30



E. Hawle Armaturenwerke GmbH 4840 Vöcklabruck - Austria - Wagrainner Straße 13
Tel.: +43 (0) 7672 72576 0 - Fax.: +43 (0) 7672 78464 - E-Mail: hawle@hawle.at - www.hawle.com

I 3/5