

MERCURY Vinkel kuglehane med målerforskruning



41.81.81.96X

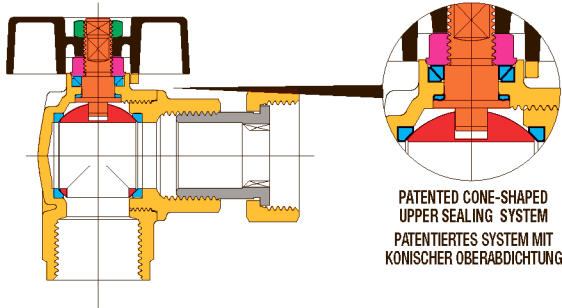
1/2" x 1/2" muf/forskruning T-greb
1/2" x 3/4" muf/forskruning T-greb

MERCURY

Vinkel kugelhane med målerforskruning



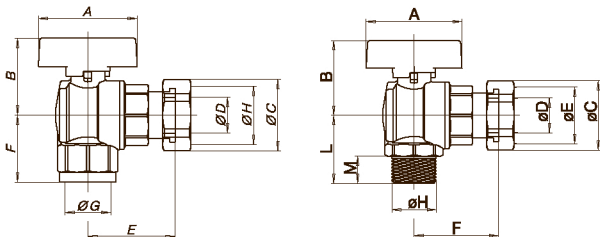
SECTION / QUERSCHNITT



LIST OF COMPONENTS: description/materials/treatments TEILELISTE: Beschreibung / Werkstoffe / Behandlungen

Body and threaded end Gehäuse und Gewindemuffe		CW617N (Pb ≤ 2,2% DIN 50930T6)
Gland Stopfbuchse		CW617N
Stem Betätigungsspindel		CW617N (Pb ≤ 2,2% DIN 50930T6)
Chromium pl. polished ball Blank verchromte Kugel		CW617N (Pb ≤ 2,2% DIN 50930T6)
Tail Schaft		CW617N (Pb ≤ 2,2% DIN 50930T6)
Nut Überwurfmutter		CW617N
Stem packing O-ring O-Ring Schaltwellenabdichtung		NBR (3/4")
Seats Dichtungen		PTFE
Operating device Betätigungselement		aluminium alloy / alu-Legierung
Fixing screw Befestigungsmutter		zinc plated steel / zinkstahl
Surface treatment Außenbehandlung	-	brilliant nickel-plating, two colours glänzend vernickelte Oberfläche, zweifarbig

DIMENSIONS / ABMESSUNGEN



	F(Rp)/TAIL+NUT(G) M(R)/TAIL+NUT(G)		M(G)/NUT(G)	
	H (RP)/SHAFT+MUTTER(G) M (R)/SHAFT+MUTTER(G)		M(G)/SHAFT+MUTTER (G)	
nominal diameter mm Nenndurchmesser mm	15	15	15	20
size in inches Zoll Abmessung	1/2" x 1/2"	1/2" x 3/4"	1/2" x 3/4"	3/4" x 3/4"
Ø D bore mm Ø D durchgang mm	10	10	15	15
A mm	47	47	47	47
B mm	30,5	30,5	37,5	37,5
Ø C mm	25	33	34	34
Ø E			3/4"	3/4"
F mm female F mm innengewinde	31	31		
F mm male F mm außengewinde	28	28	41	41
E mm	42	46		
Ø G	1/2"	1/2"		
Ø H	1/2"	3/4"	1/2"	3/4"
L mm			31,5	35
M			12	15

TECHNICAL FEATURES:

Temperature limits: for liquids from - 15C to + 120C

Pressure limits: for liquids 40 bar

SPECIFIC FEATURES:

The union nut thread size is one size larger than the female body thread connection. Size 1/2" x 1/2" is also available..

Bore: reduced.

Stem: anti blow out.

Seats: high resistance virgin PTFE.

Upper seal: **3 seals**

1 PTFE ring- high pressure

2 anti-friction self-adjusting cone shaped seals,
in PTFE- medium and low pressure.

Operation devices:

Aluminium T-handle.

Available colours: Black

All the valves comply with the regulation **CE 97/23/CE** and are tested 100% on pneumatic seal with electronic control.