

## Axor Citterio M

Single lever basin mixer for concealed installation with spout 227 mm and plate wall-mounted

Surfaces: **chrome** Article Number: **34115000**



### Description

#### product features

- handle can be positioned on the right or left, depends on the basic set installation
- projection 227 mm
- normal spray
- flow rate: 5 l/min
- ceramic cartridge
- temperature limitation adjustable
- non-closing flush grated valve
- suitable for continuous flow water heaters
- connection dimension: DN15
- P-IX 18117/IO
- ETA VA 1.42/18273
- ACS 10 ACC LY 573, valide jusqu'au 15.05.2017
- ACS 09 ACC LY 193, valide jusqu'au 05.11.2014
- WRAS 1506020
- WRAS 0910022
- SINTEF 1437
- SINTEF 1704

#### Mandatory Accessoires

- Basic set for single lever basin mixer for concealed installation wall-mounted (#13622XXX)

#### Optional Accessoires

- Extension set 25 mm (#31971XXX)
- Flowstar design trap (#52100XXX)

### Technology



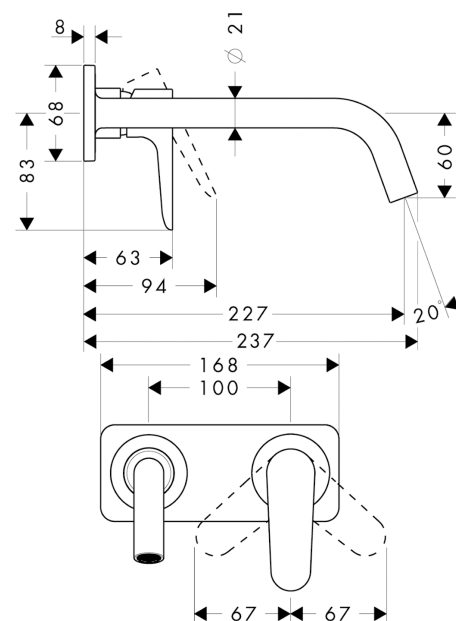
### Certificates



### Product image



### Scale drawing



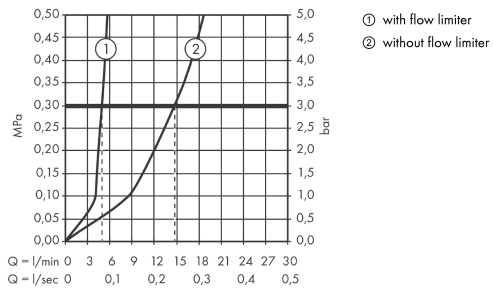
## Axor Citterio M

Single lever basin mixer for concealed installation with spout 227 mm and plate wall-mounted

Surfaces: **chrome** Article Number: **34115000**



### Flowchart



## Axor Citterio M

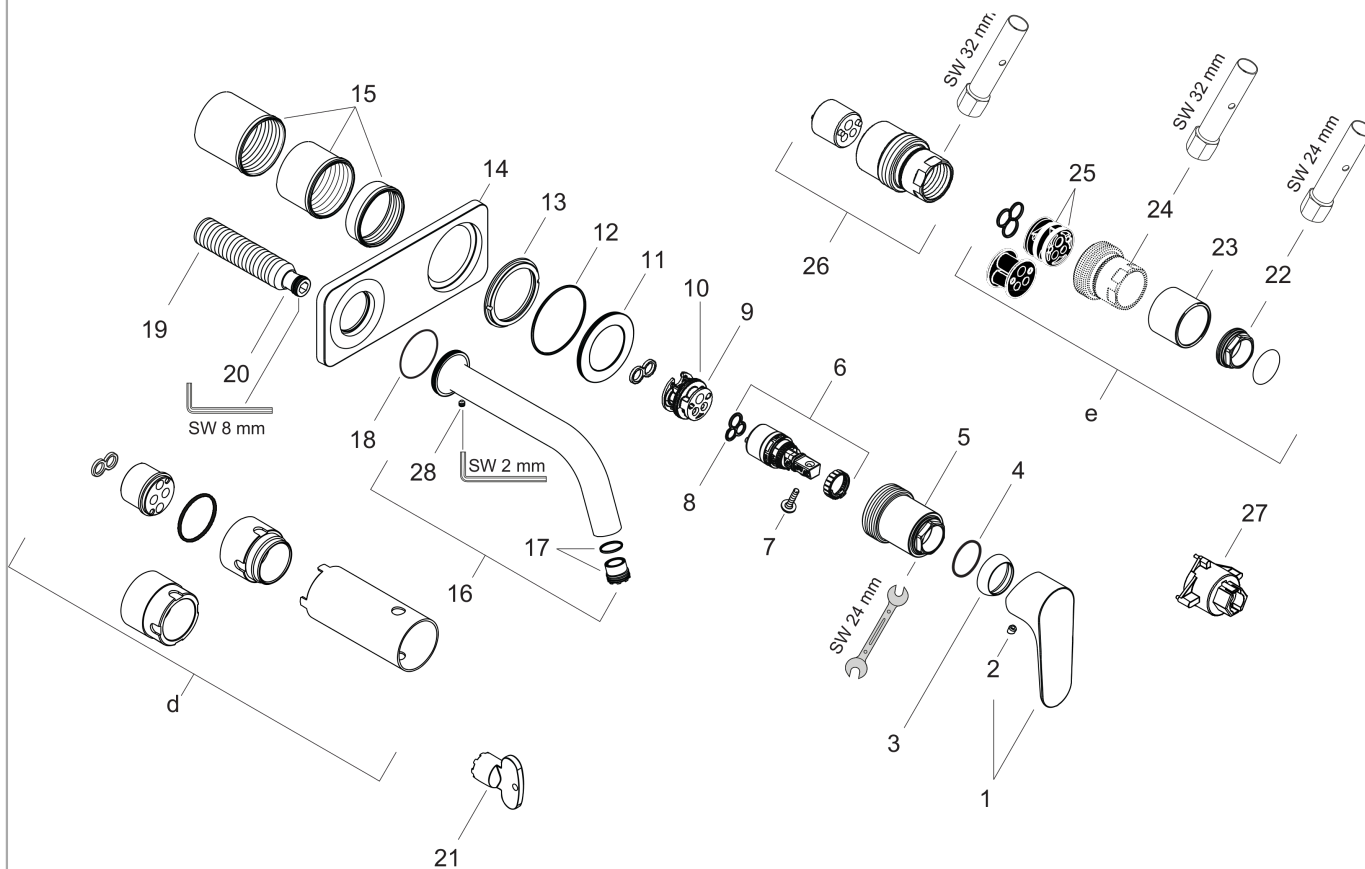
Single lever basin mixer for concealed installation with spout 227 mm and plate wall-mounted

Surfaces: chrome Article Number: 34115000



### Exploded Drawing

Year of production: >03/10



## Axor Citterio M

Single lever basin mixer for concealed installation with spout 227 mm and plate wall-mounted

Surfaces: **chrome** Article Number: **34115000**



### Spare part list

Year of production: >03/10

Pos.	Description	Article Number	PC	PU
1	handle	34097000	-	1
2	screw cover	96338000	-	1
3	flange	98863000	-	1
4	O-Ring 22x2	98185000	-	1
5	nut	95633000	-	1
6	cartridge, assy	97685000	-	1
7	locking screw for handle	95140000	-	1
8	seal	98865000	-	1
9	adapter for cartridge	95634000	-	1
10	O-ring 26x2	98147000	-	1
11	escutcheon for handle	98962000	-	1
12	O-ring 52x1,5	98200000	-	1
13	nut	98988000	-	1
14	escutcheon	98961000	-	1
15	fixing set	97971000	-	1
16	spout 220 mm	98935000	-	1
17	aerator laminar M16,5x1 (5 l/min)	95382000	-	1
18	O-ring 30x1,5	98433000	-	1
19	connecting thread G½	98933000	-	1
20	O-ring 11x2	98127000	-	1
21	special tool	98987000	-	1
22	nut	95178000	-	1
23	sleeve	98535000	-	1
24	sleeve	98958000	-	1
25	O-ring 26x1,5	98390000	-	1
26	extension set for 34111180	34983000	-	1
27	special tool	98986000	-	1
28	hollow set screw M4x5	92846000	-	1
a	base body	13622180	-	1
b	concealed item	34111180	-	1
c	pop up waste	50001000	-	1
d	extension set for 13622180	31971000	-	1
e	conversion kit for 34111180	95635000	-	1