

Axor Citterio M

3-hole basin mixer for concealed installation with spout 166 mm, lever handles and escutcheons wall-mounted



Surfaces: **chrome** Article Number: **34313000**

Description

product features

- projection 166 mm
- laminar spray
- flow rate: 5 l/min
- ceramic valves hot/ cold 90°
- temperature limitation not adjustable
- non-closing flush grated valve
- suitable for continuous flow water heaters
- connection dimension: DN15
- SVGW 1001-5666
- P-IX 9380/IA
- ETA VA 1.42/19070
- ACS 14 ACC NY 363, valide jusqu'au 20.10.2019
- WRAS 1012008
- SINTEF 1425

Mandatory Accessoires

- Basic set for 3-hole basin mixer for concealed installation wall-mounted (#10303XXX)

Optional Accessoires

- Seal (#96383XXX)
- Basic set extension for 3-hole basin mixer for concealed installation wall-mounted (#96259XXX)
- Flowstar design trap (#52100XXX)

Technology



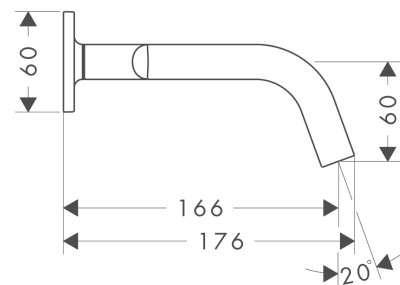
Certificates



Product image



Scale drawing



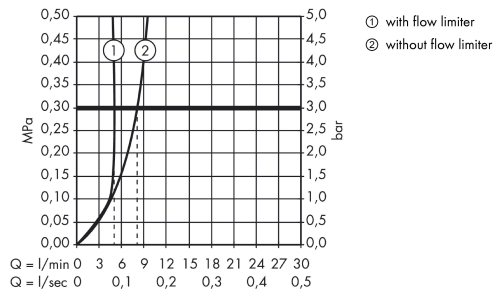
Axor Citterio M

3-hole basin mixer for concealed installation with spout 166 mm, lever handles and escutcheons wall-mounted



Surfaces: **chrome** Article Number: **34313000**

Flowchart



Axor Citterio M

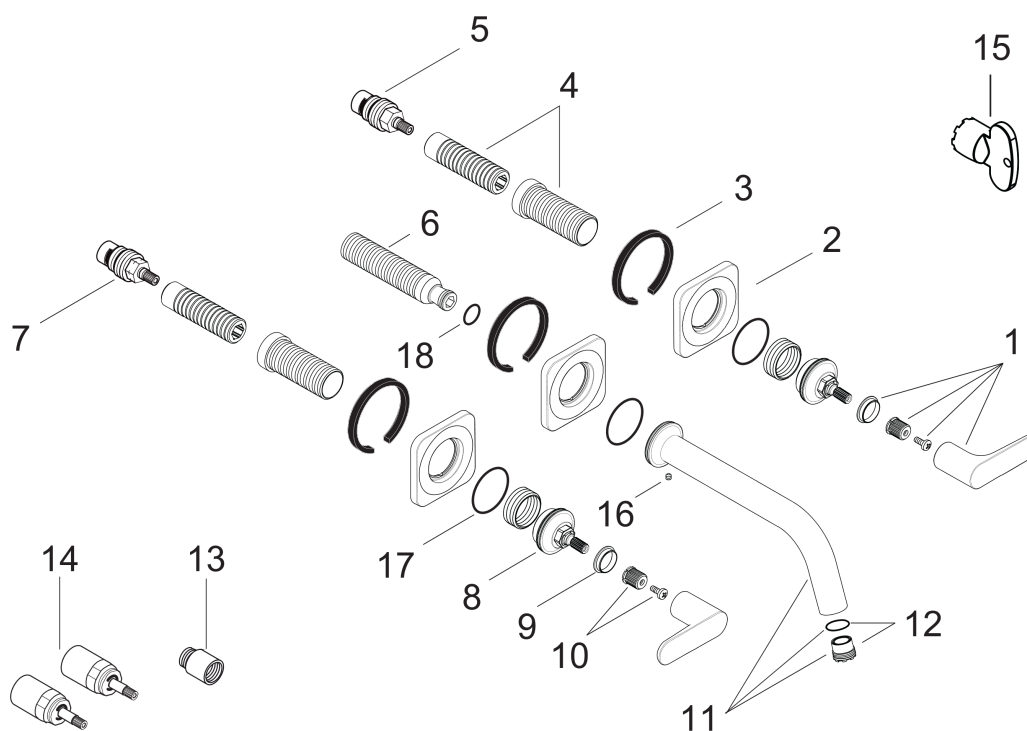
3-hole basin mixer for concealed installation with spout 166 mm, lever handles and escutcheons wall-mounted



Surfaces: **chrome** Article Number: **34313000**

Exploded Drawing

Year of production: >01/10



Axor Citterio M

3-hole basin mixer for concealed installation with spout 166 mm, lever handles and escutcheons wall-mounted



Surfaces: **chrome** Article Number: **34313000**

Spare part list

Year of production: >01/10

| Pos. | Description | Article Number | PC | PU |
|------|-------------------------------------|----------------|----|----|
| 1 | handle | 34095000 | - | 1 |
| 2 | escutcheon | 98930000 | - | 1 |
| 3 | seal | 97530000 | - | 1 |
| 4 | fixing set | 96393000 | - | 1 |
| 5 | shut off unit right closing | 96350000 | - | 1 |
| 6 | connecting thread G½ | 98933000 | - | 1 |
| 7 | shut off unit left closing | 96351000 | - | 1 |
| 8 | nut | 98929000 | - | 1 |
| 9 | set of color-rings cold / hot water | 98927000 | - | 1 |
| 10 | handle fixing set | 98932000 | - | 1 |
| 11 | spout 165 mm | 98934000 | - | 1 |
| 12 | aerator laminar M16,5x1 (5 l/min) | 95382000 | - | 1 |
| 13 | extension 25 mm | 95413000 | - | 1 |
| 14 | extension 25 mm | 96259000 | - | 1 |
| 15 | special tool | 98987000 | - | 1 |
| 16 | hollow set screw M4x5 | 92846000 | - | 1 |
| 17 | O-ring 30x1,5 | 98433000 | - | 1 |
| 18 | O-ring 11x2 | 98127000 | - | 1 |
| a | pop up waste | 50001000 | - | 1 |
| b | concealed item | 10303180 | - | 1 |