

Axor Citterio

3-hole basin mixer for concealed installation with spout 166 mm, cross handles and plate wall-mounted

Surfaces: **chrome** Article Number: **39314000**



Description

product features

- projection 166 mm
- normal spray
- flow rate: 5 l/min
- ceramic valves hot/ cold 180°
- temperature limitation not adjustable
- non-closing flush grated valve
- suitable for continuous flow water heaters
- connection dimension: DN15
- SVGW 1001-5666
- DVGW NW-6501BT0602
- P-IX 9380/IA
- ETA VA 1.42/19070
- ACS 14 ACC NY 363, valide jusqu'au 20.10.2019
- WRAS 1206320
- SINTEF 1425

Mandatory Accessoires

- Basic set for 3-hole basin mixer for concealed installation wall-mounted (#10303XXX)

Optional Accessoires

- Seal (#96383XXX)
- Basic set extension for 3-hole basin mixer for concealed installation wall-mounted (#96259XXX)
- Flowstar design trap (#52100XXX)

Technology



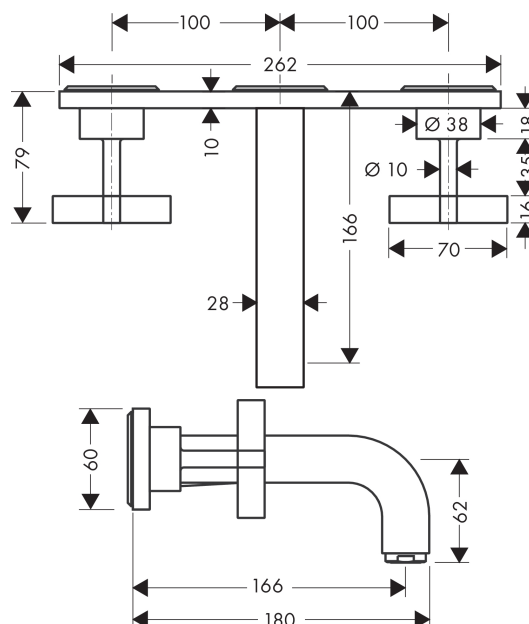
Certificates



Product image



Scale drawing



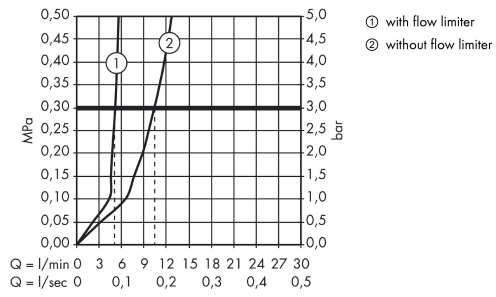
Axor Citterio

3-hole basin mixer for concealed installation with spout 166 mm, cross handles and plate wall-mounted

Surfaces: **chrome** Article Number: **39314000**



Flowchart



Axor Citterio

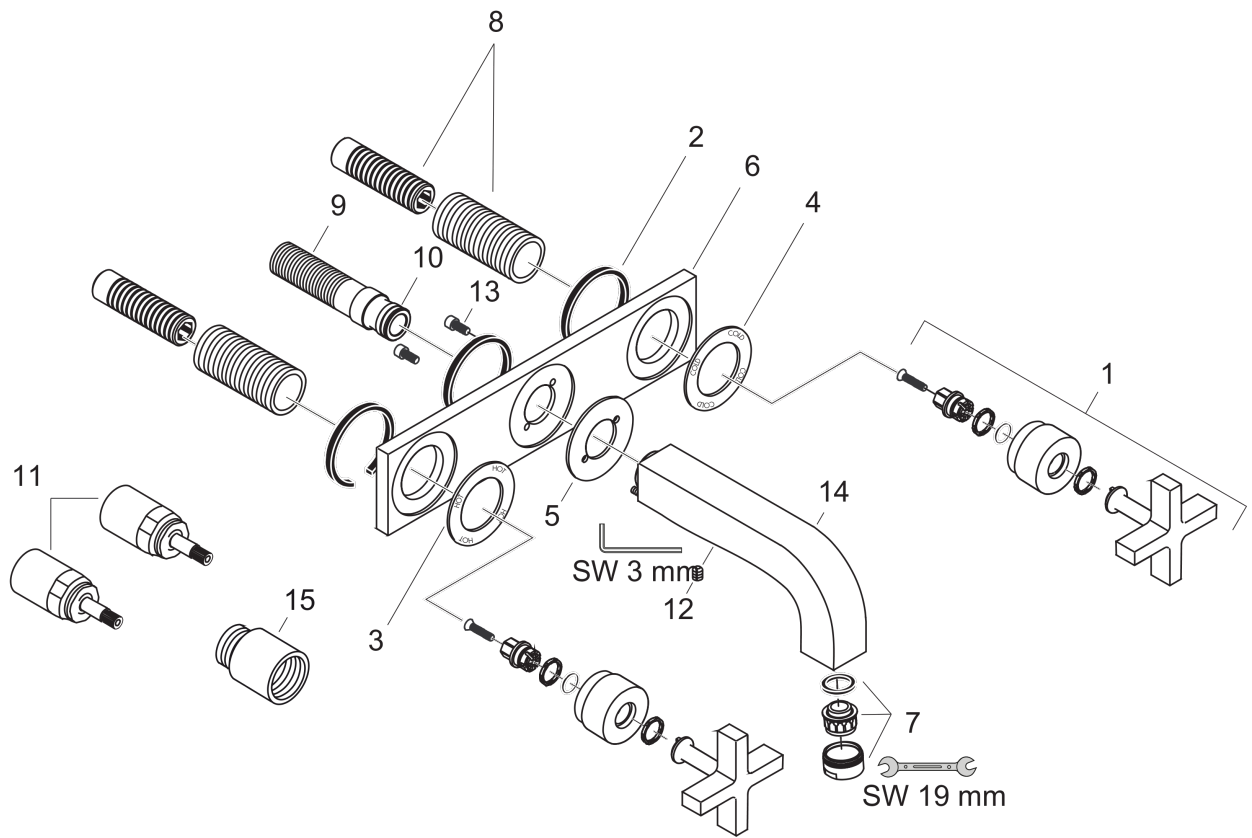
3-hole basin mixer for concealed installation with spout 166 mm, cross handles and plate wall-mounted



Surfaces: **chrome** Article Number: **39314000**

Exploded Drawing

Year of production: >04/03



Axor Citterio

3-hole basin mixer for concealed installation with spout 166 mm, cross handles and plate wall-mounted



Surfaces: **chrome** Article Number: **39314000**

Spare part list

Year of production: >04/03

Pos.	Description	Article Number	PC	PU
1	handle	39295000	-	1
2	seal	97530000	-	1
3	escutcheon hot water	96759000	-	1
4	escutcheon cold water	96758000	-	1
5	escutcheon for spout	96760000	-	1
6	escutcheon	96757000	-	1
7	aerator M24x1 (7 l/min)	13085000	-	1
8	fixing set	96392000	-	1
9	connecting thread G½	97228000	-	1
10	O-ring 16x2,5	98134000	-	1
11	extension 25 mm	96259000	-	1
12	hollow set screw M6x6	97660000	-	1
13	hexagon socket screw M4x10	97661000	-	1
14	spout 160 mm	97238000	-	1
15	extension 25 mm	95413000	-	1
a	pop up waste	50001000	-	1
b	concealed item	10303180	-	1