

Focus

Single lever kitchen mixer wall-mounted

Surfaces: **chrome** Article Number: **31825000**



Description

product features

- swivel range 180°
- normal spray
- centre distance 150 ± 12 mm
- connection dimension: DN15
- flow rate 12 l/min
- ceramic cartridge
- connection type: s-shaped connections
- suitable for continuous flow water heaters
- PA-IX 28007/IA
- ETA VA 1.42/20285
- ACS 11 ACC LY 022, valide jusqu'au 05.05.2016
- SINTEF 1876

Technology



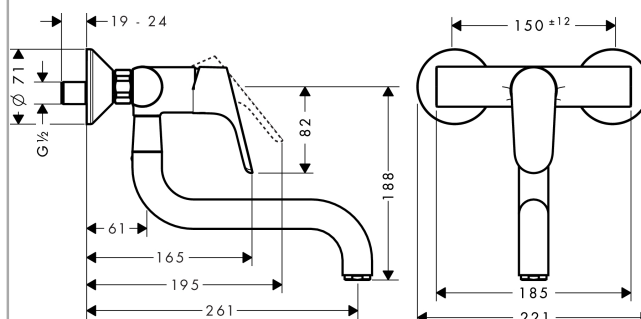
Certificates



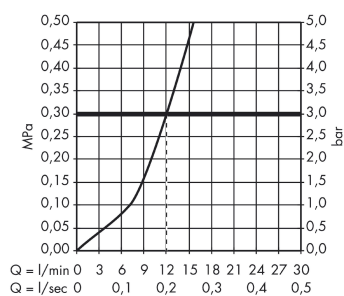
Product image



Scale drawing



Flowchart



Focus

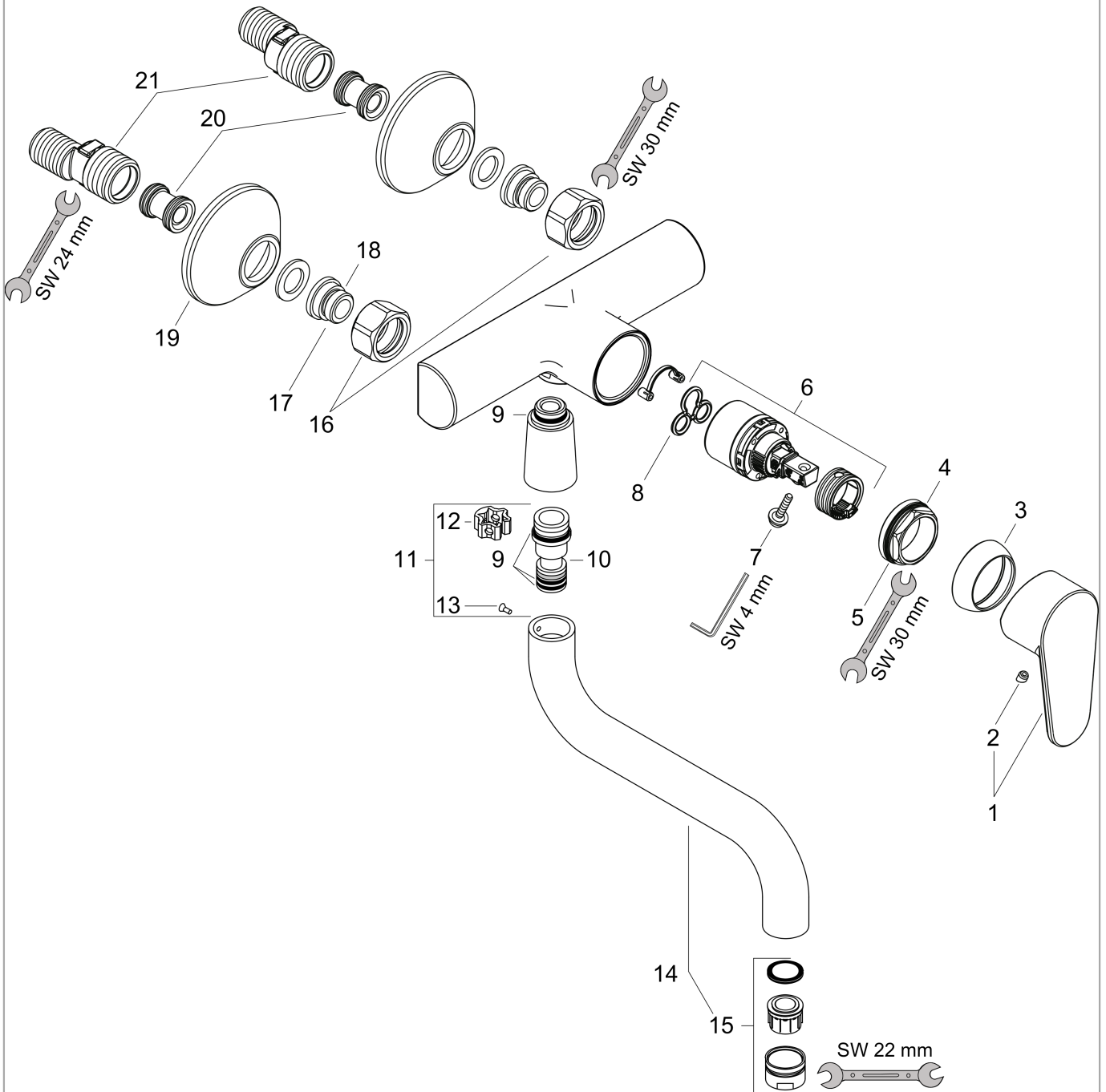
Single lever kitchen mixer wall-mounted

Surfaces: **chrome** Article Number: **31825000**



Exploded Drawing

Year of production: >11/12



Focus

Single lever kitchen mixer wall-mounted

Surfaces: **chrome** Article Number: **31825000**



Spare part list

Year of production: >11/12

Pos.	Description	Article Number	PC	PU
1	handle	98532000	-	1
2	screw cover	96338000	-	1
3	flange	97406000	-	1
4	nut	97209000	-	1
5	O-Ring 32x2	98193000	-	1
6	cartridge, assy	92730000	-	1
7	locking screw for handle	95140000	-	1
8	seal	95008000	-	1
9	O-ring 14x2	98129000	-	1
10	connecting thread	97959000	-	1
11	sealing set	97166000	-	1
12	axialring	97558000	-	1
13	screw	97662000	-	1
14	spout cpl.	92835000	-	1
15	aerator M24x1 (15 l/min)	13913000	-	1
16	set of nuts	96157000	-	1
17	connecting thread	97220000	-	1
18	O-ring 15x2	98163000	-	1
19	escutcheon Ø 70 mm	94135000	-	1
20	set of S-unions (±12 mm)	94140000	-	1
21	noise reduction	96429000	-	1
a	set of S-unions (±32 mm)	98592000	-	1