

Focus

Single lever bath mixer for exposed installation

Surfaces: **chrome** Article Number: **31940000**



Description

product features

- projection 172 - 179.5 mm
- connection type: s-shaped connections
- centre distance: 150 ± 12 mm
- normal spray
- flow rate hand shower connection at 0.3 MPa: 26 l/min
- flow rate bath filler (at 0.3 MPa): 22 l/min
- ceramic cartridge
- temperature limitation adjustable
- with automatic resetting
- non-return valve
- with silencer
- suitable for continuous flow water heaters
- connection dimension: DN15
- SVGW 0901-5488
- DVGW NW-6506BU0221
- PA-IX 18906/ICB
- ETA VA 1.42/19737
- ETA VA 1.42/18477
- ACS 11 ACC LY 022, valide jusqu'au 05.05.2016
- Kiwa UK 0912706
- WRAS 1507014
- WRAS 0912303
- Kiwa K6161_Mechanical Mixers EN817
- SINTEF 1435
- NSF Declaration C140713

Technology



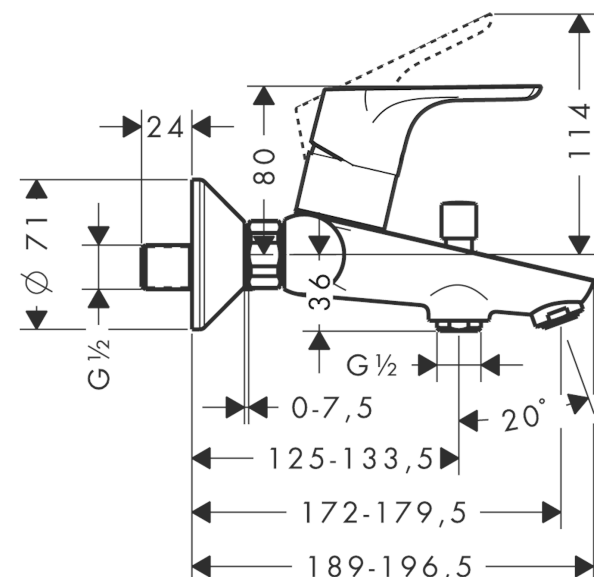
Certificates



Product image



Scale drawing



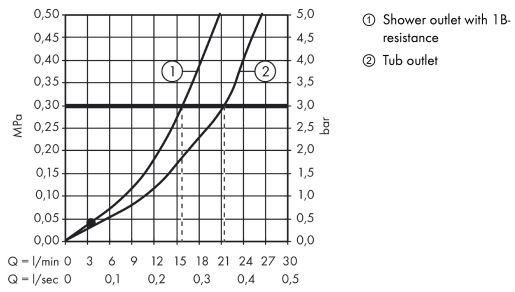
Focus

Single lever bath mixer for exposed installation

Surfaces: **chrome** Article Number: **31940000**



Flowchart



Focus

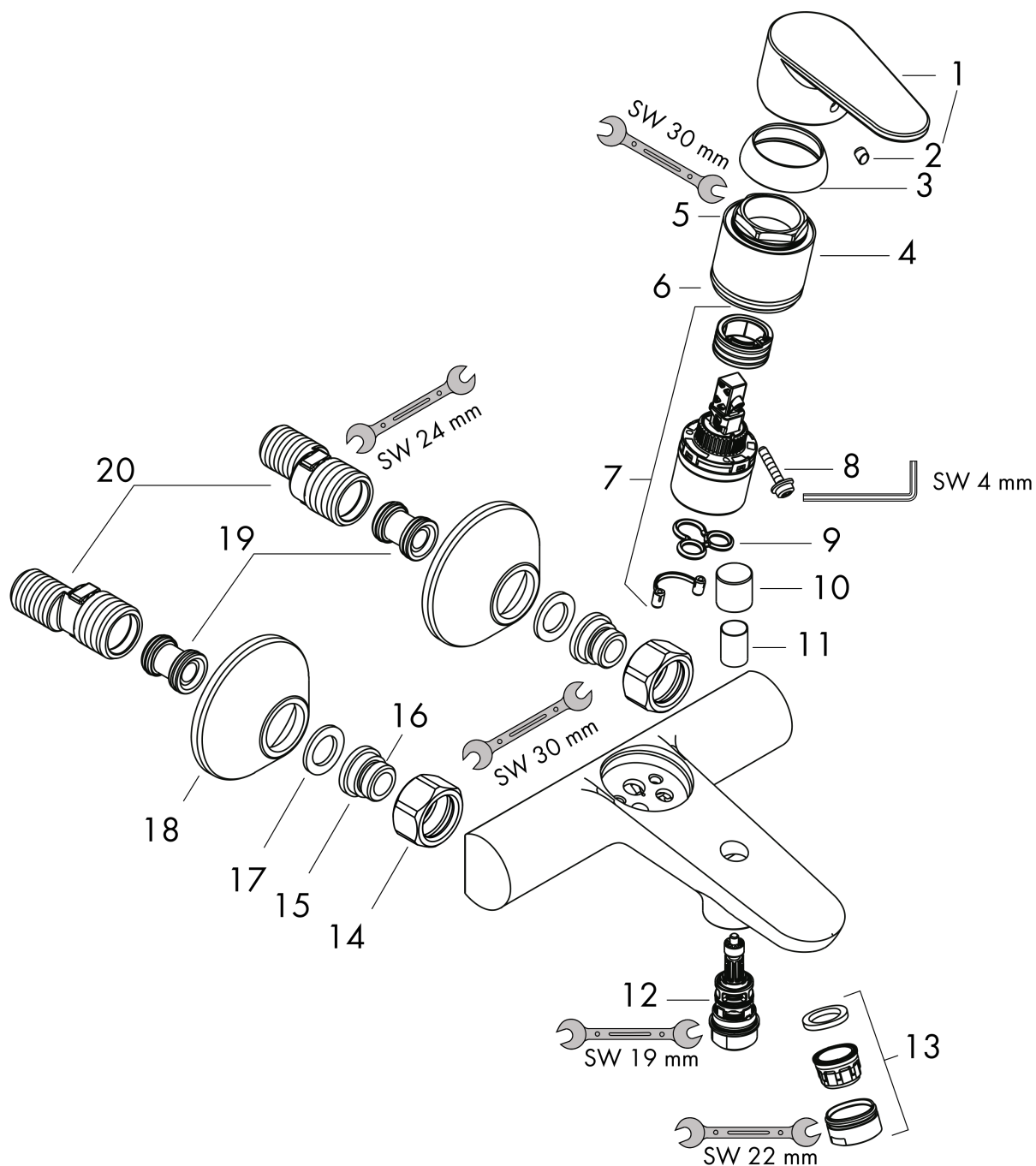
Single lever bath mixer for exposed installation

Surfaces: **chrome** Article Number: **31940000**



Exploded Drawing

Year of production: >06/14



Focus

Single lever bath mixer for exposed installation

Surfaces: **chrome** Article Number: **31940000**



Spare part list

Year of production: >06/14

Pos.	Description	Article Number	PC	PU
1	handle	98532000	-	1
2	screw cover	96338000	-	1
3	flange	97406000	-	1
4	nut	97977000	-	1
5	O-Ring 32x2	98193000	-	1
6	O-ring 33x1,5	98164000	-	1
7	cartridge, assy	92730000	-	1
8	locking screw for handle	95140000	-	1
9	seal	95008000	-	1
10	diverter knob	97981000	-	1
11	sleeve	97979000	-	1
12	selector	97978000	-	1
13	aerator M24x1 (30 l/min)	96512000	-	1
14	set of nuts	96157000	-	1
15	connecting thread	97220000	-	1
16	filter packing	96922000	-	1
17	escutcheon Ø 70 mm	94135000	-	1
18	noise reduction	96429000	-	1
19	set of S-unions (±12 mm)	94140000	-	1
a	diverter fixing device	97211000	-	1