

## Metris S

Single lever shower mixer for exposed installation

Surfaces: **chrome** Article Number: **31660000**



### Description

#### product features

- 1 outlet
- connection type: s-shaped connections
- centre distance: 150 ± 12 mm
- flow rate hand shower connection at 0.3 MPa: 12 l/min
- operating pressure: min. 0.1 MPa / max. 1.0 MPa
- ceramic cartridge
- temperature limitation adjustable
- non-return valve
- with silencer
- hose connection DN15
- connection dimension: DN15
- SVGW 0601-5046
- DVGW NW-6506BR5787
- PA-IX 9953/IB
- ETA VA 1.42/19736
- ETA VA 1.42/18425
- VTT-RTH-00006-10
- ACS 11 ACC LY 094, valide jusqu'au 10.06.2016
- Kiwa K6161\_Mechanical Mixers EN817
- SINTEF 1433

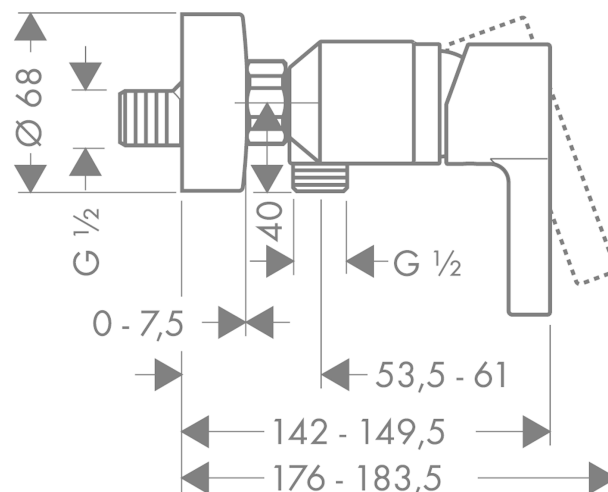
### Certificates



### Product image



### Scale drawing



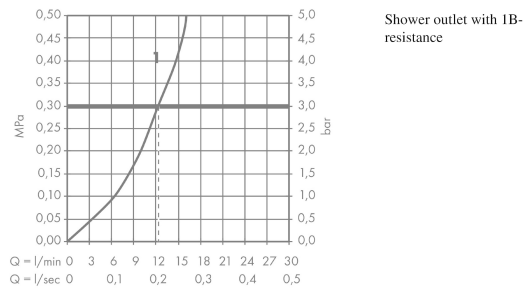
## Metris S

Single lever shower mixer for exposed installation

Surfaces: **chrome** Article Number: **31660000**



### Flowchart



## Metris S

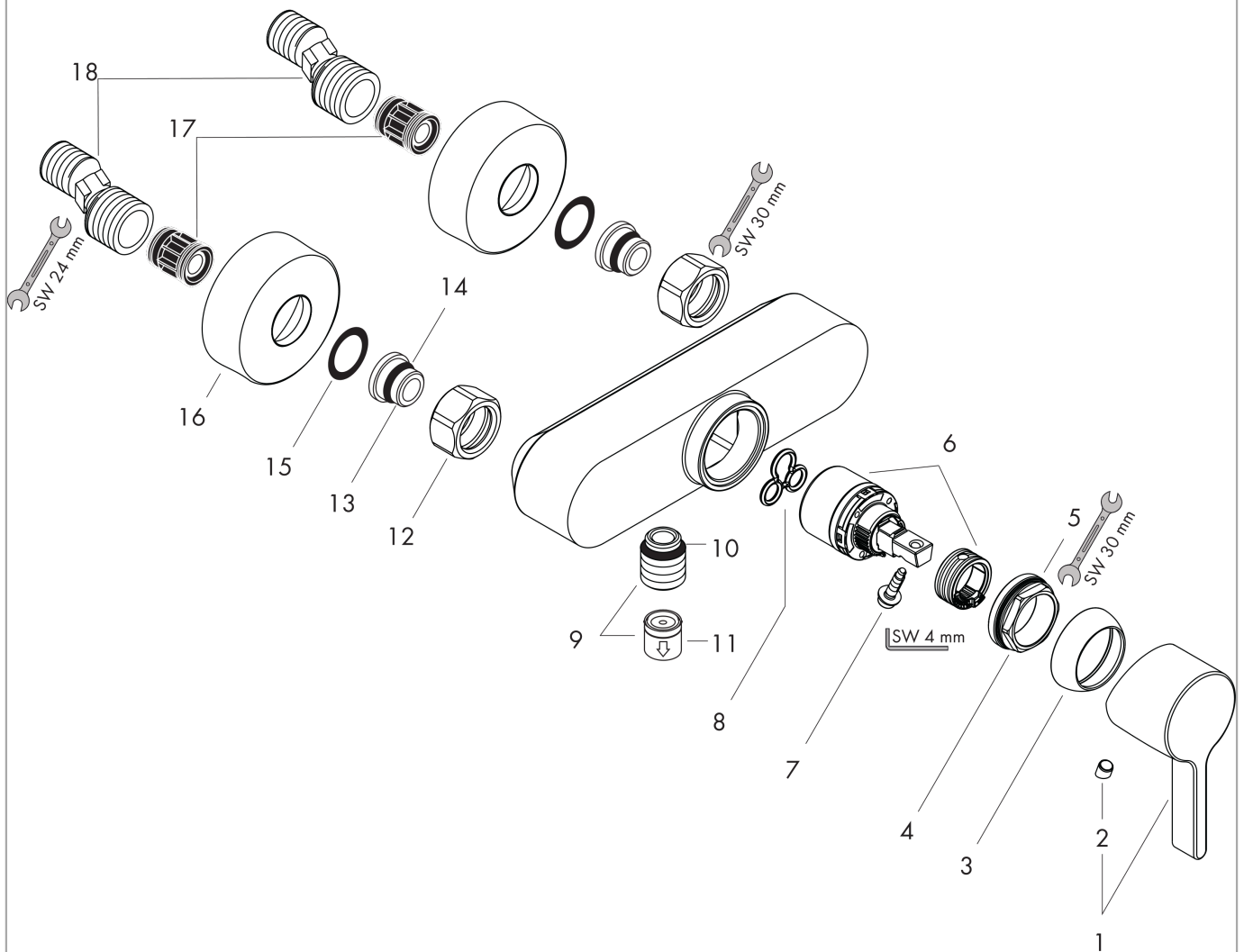
Single lever shower mixer for exposed installation

Surfaces: **chrome** Article Number: **31660000**



### Exploded Drawing

Year of production: >05/09



## Metris S

Single lever shower mixer for exposed installation

Surfaces: **chrome** Article Number: **31660000**



### Spare part list

Year of production: >05/09

Pos.	Description	Article Number	PC	PU
1	handle	31093000	-	1
2	screw cover	96338000	-	1
3	flange	97406000	-	1
4	nut	97209000	-	1
5	O-Ring 32x2	98193000	-	1
6	cartridge, assy	92730000	-	1
7	locking screw for handle	95140000	-	1
8	seal	95008000	-	1
9	Hose Connection	96044000	-	1
10	O-ring 14x2	98129000	-	1
11	set of non return valves DW 15	94074000	-	1
12	set of nuts	96157000	-	1
13	connecting thread	97220000	-	1
14	O-ring 15x2	98163000	-	1
15	filter packing	96922000	-	1
16	escutcheon Ø 68 mm	96467000	-	1
17	noise reduction	96429000	-	1
18	set of S-unions (±12 mm)	94140000	-	1
a	set of S-unions (±32 mm)	98592000	-	1