

**Axor Citterio M**  
**Single lever bath mixer for exposed installation**  
 Surfaces: **chrome**    Article Number: **34420000**



## Description

### product features

- projection 200 mm
- connection type: s-shaped connections
- centre distance:  $150 \pm 16$  mm
- normal spray
- ceramic cartridge
- temperature limitation adjustable
- with automatic resetting
- non-return valve
- with silencer
- no integrated shower support
- suitable for continuous flow water heaters
- connection dimension: DN15
- scope of supply: escutcheons
- SVGW 0504-4961
- DVGW NW-6506BT0646
- PA-IX 9866/IIDB
- ACS 11 ACC LY 022, valide jusqu'au 05.05.2016
- SINTEF 1436
- NSF-WRc C150092

## Technology



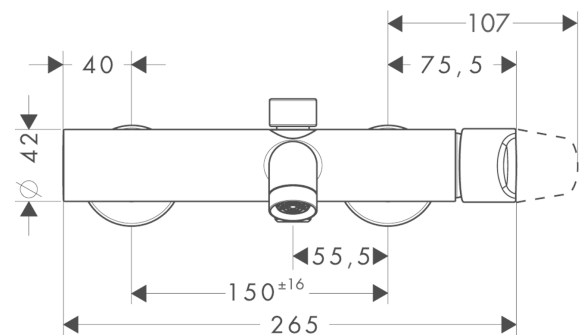
## Certificates



## Product image



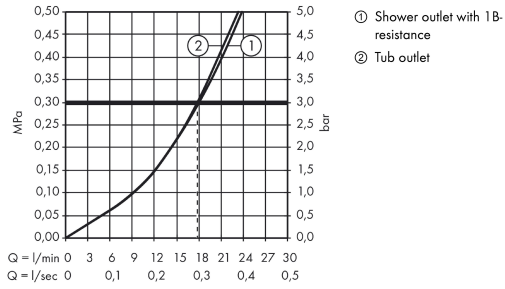
## Scale drawing



**Axor Citterio M**  
**Single lever bath mixer for exposed installation**  
 Surfaces: **chrome**    Article Number: **34420000**



## Flowchart

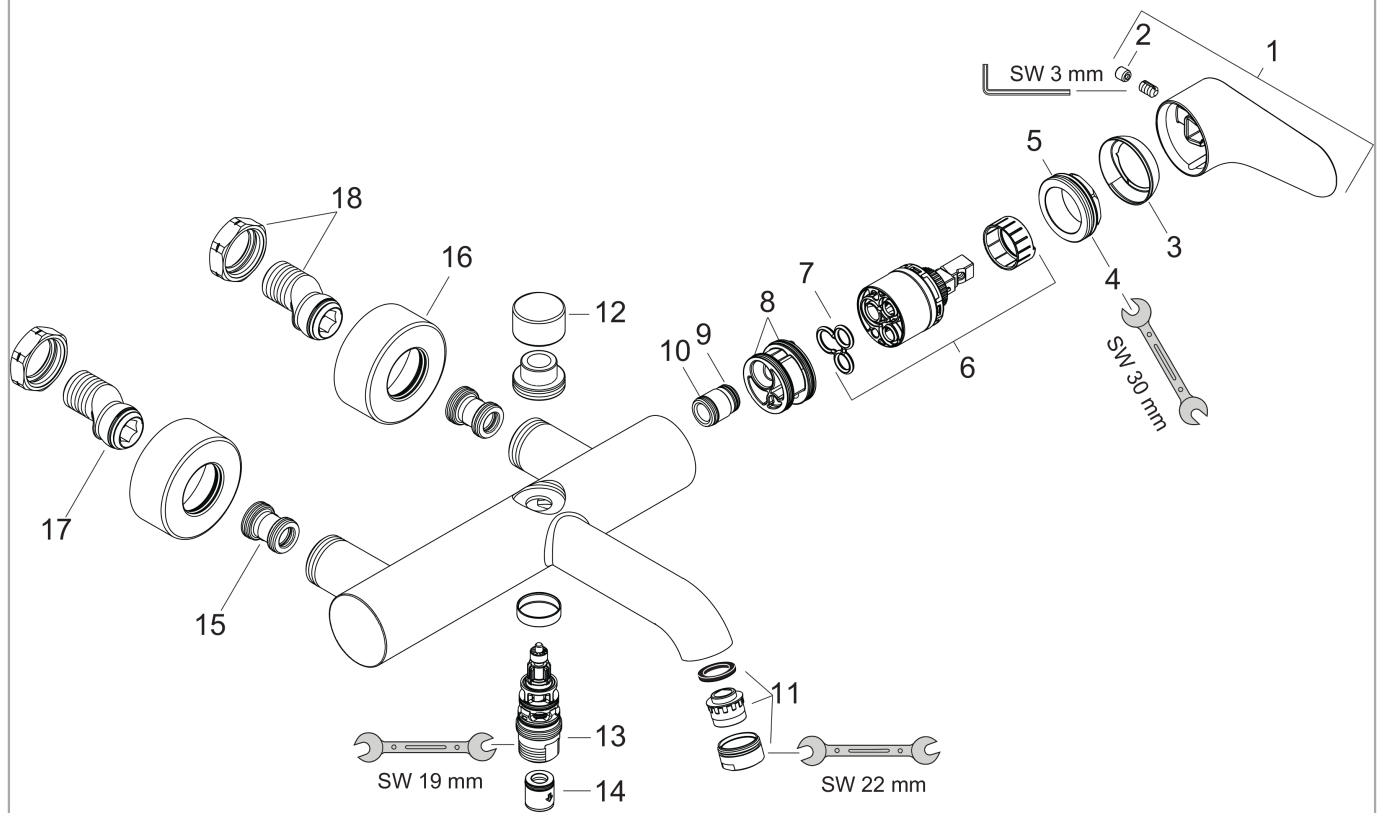


**Axor Citterio M**  
**Single lever bath mixer for exposed installation**  
Surfaces: **chrome** Article Number: **34420000**



## Exploded Drawing

Year of production: >01/08



**Axor Citterio M**  
**Single lever bath mixer for exposed installation**  
 Surfaces: **chrome** Article Number: **34420000**



## Spare part list

Year of production: >01/08

Pos.	Description	Article Number	PC	PU
1	handle	34094000	-	1
2	screw cover	96762000	-	1
3	flange	96763000	-	1
4	nut	97209000	-	1
5	O-ring 33x2	98154000	-	1
6	cartridge, assy	92730000	-	1
7	seal	95008000	-	1
8	O-ring 29x2	98391000	-	1
9	O-ring 11x2	98127000	-	1
10	O-ring 12x2	98214000	-	1
11	aerator M24x1 (25 l/min)	97356000	-	1
12	diverter knob	97355000	-	1
13	selector assy	94077000	-	1
14	set of non return valves DW 15	94074000	-	1
15	noise reduction	96429000	-	1
16	escutcheon Ø 59 mm	97507000	-	1
17	O-ring 18x2,5	98139000	-	1
18	set of S-unions with nuts	96742000	-	1
a	diverter fixing device	97211000	-	1