

## Axor Starck

### 2jet baton hand shower

Surfaces: **chrome** Article Number: **28532000**



#### Description

##### product features

- spray type adjustment by turning spray disc
- spray type: Normal spray, Soft spray
- maximum flow rate (at 0.3 MPa): 16 l/min
- not suitable for rim-/ tile-mounted mixers
- metal cover
- rinseable dirt filter
- connection thread G ½
- connection dimension: DN15
- suitable for continuous flow water heaters
- SVGW 0506-4976
- DVGW NW-6517BR0047
- P-IX 9990/IB
- ACS 14 ACC NY 328, valide jusqu'au 23.10.2019
- WRAS 1205333
- Kiwa K6053\_Showers

##### Optional Accessoires

- Metal effect shower hose 1.25 m (#28282XXX)
- Metal effect shower hose 1.60 m (#28286XXX)
- Metal effect shower hose 2.00 m (#28284XXX)

#### Technology



#### Certificates

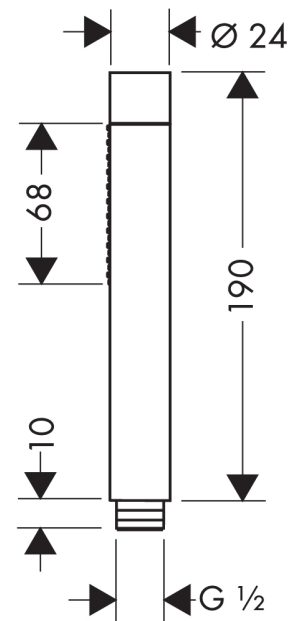


# kiwa

#### Product image



#### Scale drawing



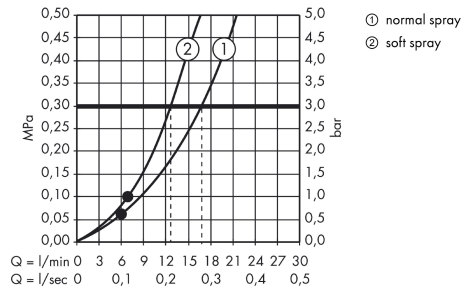
## Axor Starck

### 2jet baton hand shower

Surfaces: **chrome** Article Number: **28532000**



#### Flowchart



The consumption was measured in combination with the appropriate fittings (thermostat/mixer/in-wall valve) to reflect actual application in practice.

Axor Starck

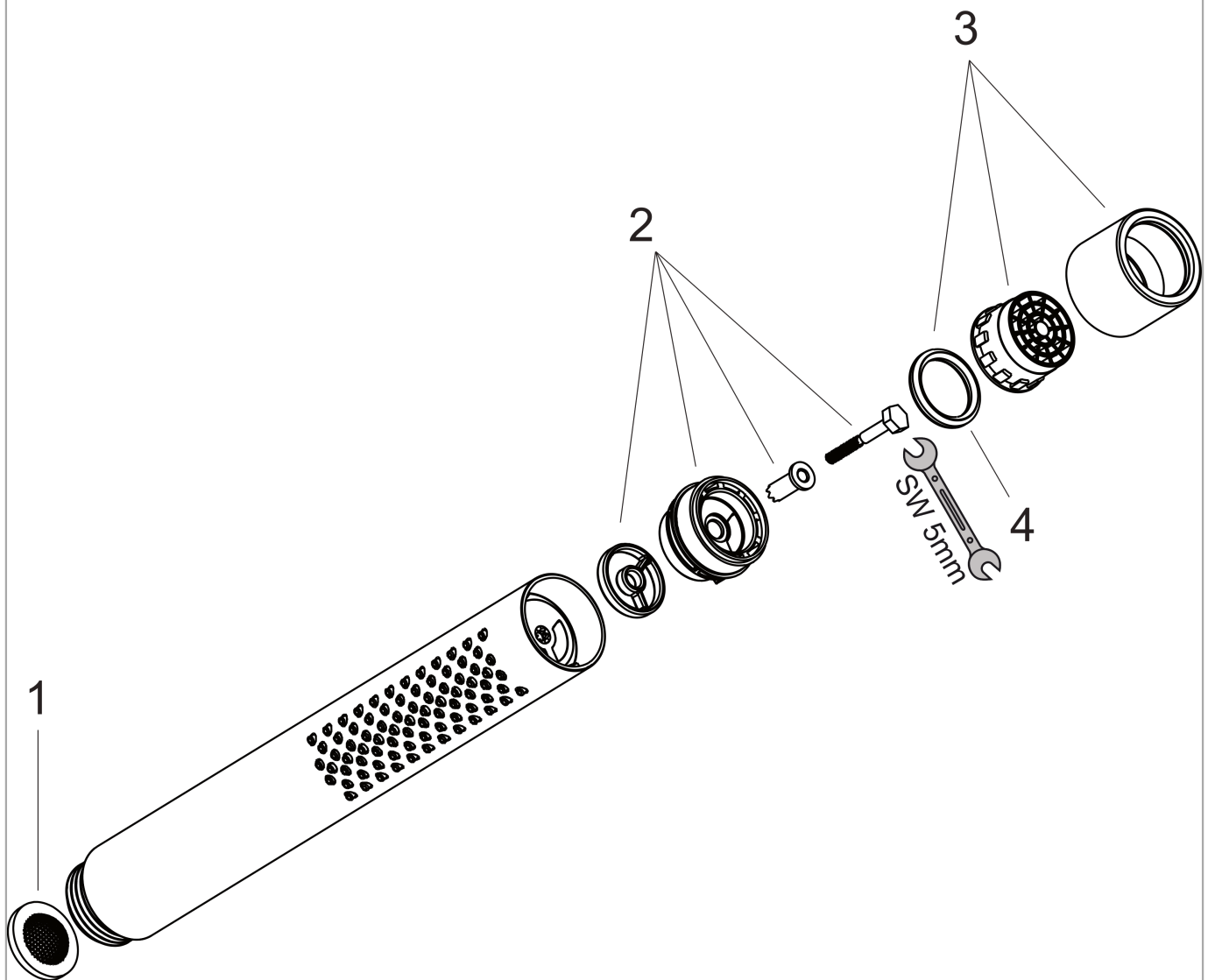
2jet baton hand shower

Surfaces: **chrome** Article Number: **28532000**



## Exploded Drawing

Year of production: >04/05



**Axor Starck**

**2jet baton hand shower**

Surfaces: **chrome** Article Number: **28532000**



**Spare part list**

Year of production: >04/05

Pos.	Description	Article Number	PC	PU
1	filter packing	94246000	-	1
2	selector assy	95511000	-	1
3	spray former	95411000	-	1
4	O-Ring 14x2,5	98189000	-	1
a	flow-restrictor-set	92019000	-	1