

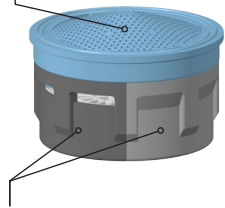


All NEOPERL aerators are colour-coded (Watercolours® concept) and can thus easily be identified in terms of flow rate and stream pattern (aerated or laminar).

This simplifies the faucet production process as well as the procurement of spare parts.

### 1 Models with restrictor

Color of the dome screen identifies flow rate



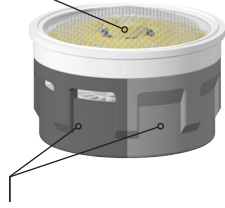
### 4 All models

Color of the lower part of the insert identifies stream pattern (aerated or laminar)

### 2 PCA® Models

(with flow regulator)

Color of the flow regulator identifies flow rate; flow regulator visible through transparent dome screen.

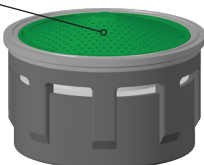


### 4 All models

Color of the lower part of the insert identifies stream pattern (aerated or laminar)

### 3 Low Pressure Models (LP)

Color of the dome screen in combination with the ring color identifies LP models



1 Dome Screen	Flow Class	Flow Rate	Noise Reduced
light green	Z *	7.5-9.0 l/min at 3 bar	•
light blue	A *	13.5-15.0 l/min at 3 bar	•
yellow	S *	18.0-19.8 l/min at 3 bar	•
dark blue	B *	22.8-25.2 l/min at 3 bar	•
dark gray	C *	27.0-30.0 l/min at 3 bar	•
light gray	D *	34.8-37.8 l/min at 3 bar	•
orange	G	60.0-70.0 l/min at 1 bar	•
gray	M	60.0-70.0 l/min at 3 bar	•
ivory		1.0 gpm max. at 60 psi	
green	T	1.5 gpm max. at 60 psi	•
brown		1.75 gpm max. at 60 psi	
olive		2.0 gpm max. at 60 psi	
red	X	2.2 gpm max. at 60 psi	•
beige		3.0 gpm max. at 60 psi	
black		3.5 gpm max. at 60 psi	
pink	W	4.0 gpm max. at 60 psi // 7.5 l/min at 1 bar	
lilac	Y	4.5 gpm max. at 60 psi // 7.5 l/min at 1 bar	
white	lam. max.		

1 Models with restrictor

(\*) according to DIN EN246

2 Flow Regulator	Flow Rate	
brown		0.35 gpm max.
lime		0.5 gpm max.
dark gray	2.0 l/min	
light gray	2.5 l/min	
beige	3.0 l/min	
blue		1.0 gpm max.
pink		1.25 gpm max.
orange	5.0 l/min	
green		1.5 gpm max.
black	6.0 l/min	
light blue		1.75 gpm max.
light green	7.0 l/min	
lilac		2.0 gpm max.
yellow		2.2 gpm max.
white	8.0 l/min	

2 PCA® Models

3 Low Pressure Models

Dome Screen	Ring	Flow Rate	Flow STD size inserts (measured at 0.2 bar)
green	l. gray	Q	2.5 l/min
blue	white	V	5.2 l/min

4 All models

4 Lower part of the insert	Flow Pattern
dark gray	aerated
gray	laminar



# CACHÉ® Aerators

## CASCADE® and HONEYCOMB models



flow, stop and go®

- ▶ a threaded aerator for tubular spouts
- ▶ freedom of design, protection from vandalism
- ▶ available with various other features: SLC, SSR, Spray, Coin Slot
- ▶ please refer to separate product overviews

### Models with Restrictor

Flow Rate	Colour Code	TT Size HONEYCOMB®	TJ Size HONEYCOMB®	JR Size HONEYCOMB®	STD Size HONEYCOMB®	STD Size CASCADE®
Z	7.5 - 9.0 l/min at 3 bar	light green	-	43.2202.010	42.2202.010	40.2202.010
A	13.5 - 15.0 l/min at 3 bar	light blue	-	43.2203.010	42.2203.010	40.2203.010
S	18.0 - 19.8 l/min at 3 bar	yellow	-	-	-	40.2204.010
B	22.8 - 25.2 l/min at 3 bar	dark blue	-	43.2205.010	42.2205.010	40.2205.010
C	27.0 - 30.0 l/min at 3 bar	dark grey	-	-	-	40.2206.010
D	34.8 - 37.8 l/min at 3 bar	light grey	-	-	-	40.2207.010
	1.0 gpm max at 60 psi	ivory	44.3231.060	-	-	40.3231.010
T	1.5 gpm max at 60 psi	green	44.3232.060	-	-	40.2210.010
	1.75 gpm max at 60 psi	brown	-	-	-	40.3239.010
	2.0 gpm max at 60 psi	olive	-	-	-	40.3233.010
X	2.2 gpm max at 60 psi	red	44.3234.010	43.2201.010	42.2201.010	40.2201.010
	3.0 gpm max at 60 psi	beige	-	-	-	40.3235.010
	3.5 gpm max at 60 psi	black	-	-	-	40.3236.010
W	4.0 gpm max at 60 psi // 7.5 l/min at 1 bar	pink	-	-	-	40.3237.010
Y	4.5 gpm max at 60 psi // 7.5 l/min at 1 bar	lilac	-	-	-	40.3238.010
V	6.0 gpm max at 60 psi	blue	44.3230.010	43.3230.010	42.3230.010	40.3230.010

### PCA® Models

Flow Rate	Colour Code	TT Size HONEYCOMB®	TJ Size HONEYCOMB®	JR Size HONEYCOMB®	STD Size HONEYCOMB®	STD Size CASCADE®
	1.0 gpm max.	blue	44.3258.010	-	-	40.2258.010
	1.25 gpm max.	pink	44.3260.010	-	-	40.2260.010
5.0 l/min		orange	44.3251.010	43.2251.010	42.2251.010	40.2251.010
	1.5 gpm max.	green	44.3256.010	43.2256.010	42.2256.010	40.2256.010
	1.75 gpm max.	light blue	44.3261.010	43.2261.010	42.2261.010	40.2261.010
7.0 l/min		light green	44.3255.010	43.2255.010	42.2255.010	40.2255.010
	2.0 gpm max.	lilac	44.3257.010	43.2257.010	42.2257.010	40.2257.010
	2.2 gpm max.	yellow	44.3253.010	43.2253.010	42.2253.010	40.2253.010
8.0 l/min		white	44.3254.010	43.2254.010	42.2254.010	40.2254.010

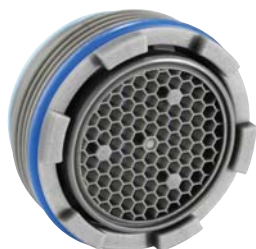
### Approvals

For an updated list of approvals and copies of the original certificates, please refer to our website at [www.neoperl.net](http://www.neoperl.net)

# CACHÉ® PERLATOR® HONEYCOMB laminar



flow, stop and go®



- ▶ a threaded aerator for tubular spouts
- ▶ no housing necessary
- ▶ freedom of design, protection from vandalism
- ▶ please refer to separate product overviews

## Models with Restrictor

	Flow Rate	Colour Code	TT Size	TJ Size	JR Size	STD Size
Z	7.5 - 9.0 l/min at 3 bar	light green	-	43.2302.010	-	40.2302.010
A	13.5 - 15.0 l/min at 3 bar	light blue	-	43.2303.010	-	40.2303.010
S	18.0 - 19.8 l/min at 3 bar	yellow	-	-	-	40.2304.010
B	22.8 - 25.2 l/min at 3 bar	dark blue	-	43.2305.010	-	40.2305.010
C	27.0 - 30.0 l/min at 3 bar	dark grey	-	-	-	40.2306.010
D	34.8 - 37.8 l/min at 3 bar	light grey	-	-	-	40.2307.010
	1.0 gpm max at 60 psi	ivory	44.3331.010	-	-	-
T	1.5 gpm max at 60 psi	green	44.3332.010	43.3332.010	42.3332.010	40.2310.010
X	2.2 gpm max at 60 psi	red	44.3334.010	43.2301.010	42.2301.010	40.2301.010
V	maximum flow	blue	44.3330.010	43.3330.010	42.3330.010	-

## PCA® Models

	Flow Rate	Colour Code	TT Size	TJ Size	JR Size	STD Size
	0.5 gpm max.	lime	44.3359.010	-	-	-
	1.0 gpm max.	blue	44.3358.010	-	-	40.2358.010
	1.25 gpm max.	pink	44.3360.010	-	-	40.2360.010
5.0 l/min		orange	44.3351.010	43.2351.010	42.2351.010	40.2351.010
	1.5 gpm max.	green	44.3356.010	43.2356.010	42.2356.010	40.2356.010
	1.75 gpm max.	light blue	44.3361.010	43.2361.010	42.2361.010	40.2361.010
7.0 l/min		light green	44.3355.010	43.2355.010	42.2355.010	40.2355.010
	2.0 gpm max.	lilac	44.3357.010	43.2357.010	42.2357.010	40.2357.010
	2.2 gpm max.	yellow	44.3353.010	43.2353.010	42.2353.010	40.2353.010
8.0 l/min		white	44.3354.010	43.2354.010	42.2354.010	40.2354.010

## Approvals

For an updated list of approvals and copies of the original certificates, please refer to our website at [www.neoperl.net](http://www.neoperl.net)

# CACHÉ® CASCADE® SLC



flow, stop and go®

## Aerators



- ▶ a threaded aerator for tubular spouts
- ▶ SLC feature - simply rub the lime away with your finger
- ▶ maximum lime resistance and life span
- ▶ freedom of design, protection from vandalism

Models with Restrictor					
Flow Rate		Colour Code	M18,5x1 TJ Size	M21,5x1 JR Size	M24x1 STD Size
Z	7.5-9.0 l/min at 3 bar	light green	43.0202.010	42.0202.010	40.0202.010
A	13.5-15.0 l/min at 3 bar	light blue	43.0203.010	42.0203.010	40.0203.010
S	18.0-19.8 l/min at 3 bar	yellow	-	-	40.0204.010
B	22.8-25.2 l/min at 3 bar	dark blue	43.0205.010	42.0205.010	40.0205.010
C	27.0-30.0 l/min at 3 bar	dark grey	-	-	40.0206.010
D	34.8-37.8 l/min at 3 bar	light grey	-	-	40.0207.010
T	1.5 gpm max at 60 psi	green	-	-	40.0210.010
X	2.2 gpm max at 60 psi	red	43.0201.010	42.0201.010	40.0201.010

PCA® Models					
Flow Rate		Colour Code	M18,5x1 TJ Size	M21,5x1 JR Size	M24x1 STD Size
	1.0 gpm max.	blue	-	-	40.0258.010
	1.25 gpm max.	pink	-	-	40.0260.010
5.0 l/min		orange	43.0251.010	42.0251.010	40.0251.010
	1.5 gpm max.	green	43.0256.010	42.0256.010	40.0256.010
6.0 l/min		black	-	-	40.0252.010
	1.75 gpm max.	light blue	43.0261.010	42.0261.010	40.0261.010
7.0 l/min		light green	43.0255.010	42.0255.010	40.0255.010
	2.0 gpm max.	lilac	43.0257.010	42.0257.010	40.0257.010
	2.2 gpm max.	yellow	43.0253.010	42.0253.010	40.0253.010
8.0 l/min		white	43.0254.010	42.0254.010	40.0254.010

### Approvals

For an updated list of approvals and copies of the original certificates, please refer to our website at [www.neoperl.net](http://www.neoperl.net)

NEOPERL GmbH • Klosterrunsstr. 9-11 • D-79379 Müllheim • Phone +49 7631 188-0 • Fax +49 7631 188-287 • E-Mail: [info@neoperl.net](mailto:info@neoperl.net)  
 NEOPERL International AG • Pfeffingerstr. 21 • CH-4153 Reinach BL • Phone +41 61 716 74 00 • Fax +41 61 716 74 49

[www.neoperl.net](http://www.neoperl.net)

# CACHÉ<sup>®</sup> PCA<sup>®</sup> Spray (SLC) Aerators



flow, stop and go<sup>®</sup>



- ▶ threaded aerators for tubular spouts
- ▶ freedom of design, protection from vandalism
- ▶ good water dispersion at low flow rates
- ▶ virtually unbreakable, longlasting single piece insert
- ▶ recommended for application in series lavatory faucets
- ▶ available with SLC (smart lime cleaning) feature



CACHE <sup>®</sup> PCA <sup>®</sup> Spray					
Flow Rate	Colour Code	M16,5x1 TT Size	M18,5x1 TJ Size	M21,5x1 JR Size	M24x1 STD Size
0.35 gpm	brown	--	--	42.7368.010	40.7368.010
0.5 gpm max	lime	44.7359.010	43.7359.010	42.7359.010	40.7359.010
1.0 gpm max	blue	44.7358.010	43.7358.010	42.7358.010	40.7358.010

CACHE <sup>®</sup> PCA <sup>®</sup> Spray SLC - smart lime cleaning					
Flow Rate	Colour Code	M16,5x1 TT Size	M18,5x1 TJ Size	M21,5x1 JR Size	M24x1 STD Size
0.35 gpm max	brown	--	43.7468.010	42.7468.010	--
0.5 gpm max	lime	--	43.7459.010	42.7459.010	40.7459.010
1.0 gpm max	blue	--	43.7458.010	42.7458.010	40.7458.010

## Approvals

For an updated list of approvals and copies of the original certificates, please refer to our website at [www.neoperl.net](http://www.neoperl.net)

NEOPERL GmbH • Klosterrunsstr. 9-11 • D-79379 Müllheim • Phone +49 7631 188-0 • Fax +49 7631 188-287 • E-Mail: [info@neoperl.net](mailto:info@neoperl.net)  
NEOPERL International AG • Pfeffingerstr. 21 • CH-4153 Reinach BL • Phone +41 61 716 74 00 • Fax +41 61 716 74 49

[www.neoperl.net](http://www.neoperl.net)

# CACHÉ<sup>®</sup> SSR Aerator

NEOPERL<sup>®</sup>

flow, stop and go<sup>®</sup>



- ▶ a threaded aerator for tubular spouts
- ▶ SSR feature - adjustable stream direction due to a flexible tilting plate
- ▶ swivel angle: +/- 10°
- ▶ freedom of design, protection from vandalism

## Models with Restrictor

Flow Rate		Colour Code	M18,5x1 TJ Insert	M21,5x1 JR Insert	M24x1 STD Insert
Z	7.5 - 9.0 l/min at 3 bar	light green	43.6202.010	42.6202.010	40.6202.010
A	13.5 - 15.0 l/min at 3 bar	light blue	43.6203.010	42.6203.010	40.6203.010
S	18.0 - 19.8 l/min at 3 bar	yellow	-	-	40.6204.010
B	22.8 - 25.2 l/min at 3 bar	dark blue	43.6205.010	42.6205.010	40.6205.010
C	27.0 - 30.0 l/min at 3 bar	dark grey	-	-	40.6206.010
D	34.8 - 37.8 l/min at 3 bar	light grey	-	-	40.6207.010
X	2.2 gpm max at 60 psi	red	43.6201.010	42.6201.010	40.6201.010

## PCA<sup>®</sup> Models

Flow Rate		Colour Code	M18,5x1 TJ Insert	M21,5x1 JR Insert	M24x1 STD Insert
5.0 l/min		orange	43.6251.010	42.6251.010	40.6251.010
	1.5 gpm max.	green	43.6256.010	42.6256.010	40.6256.010
	1.75 gpm max.	light blue	43.6261.010	42.6261.010	40.6261.010
7.0 l/min		light green	43.6255.010	42.6255.010	40.6255.010
	2.0 gpm max.	lilac	43.6257.010	42.6257.010	40.6257.010
	2.2 gpm max.	yellow	43.6253.010	42.6253.010	40.6253.010
8.0 l/min		white	43.6254.010	42.6254.010	40.6254.010

## Approvals

For an updated list of approvals and copies of the original certificates, please refer to our website at [www.neoperl.net](http://www.neoperl.net)

NEOPERL GmbH • Klosterrunsstr. 9-11 • D-79379 Müllheim • Phone +49 7631 188-0 • Fax +49 7631 188-287 • E-Mail: [info@neoperl.net](mailto:info@neoperl.net)  
NEOPERL International AG • Pfeffingerstr. 21 • CH-4153 Reinach BL • Phone +41 61 716 74 00 • Fax +41 61 716 74 49

[www.neoperl.net](http://www.neoperl.net)

# CASCADE® SLC Aerators



flow, stop and go®

## Special SLC Features:

- ▶ Smart Lime Cleaning (SLC) for a maximum lifespan of your faucet aerator: rub the lime away with your finger, and the faucet stream is straight and soft again
- ▶ no need to disassemble the aerator for cleaning



## STD / TJ Size Models with Restrictor

	Flow Rate	Colour Code	STD Insert	Female M22x1	Male M24x1	TJ Insert	Female M19x1	Male M20x1
Z	7.5 - 9.0 l/min at 3 bar	light green	40.0002.000	40.0002.023	40.0002.033	43.0002.000	43.0002.023	43.0002.033
A	13.5 - 15.0 l/min at 3 bar	light blue	40.0003.000	40.0003.023	40.0003.033	43.0003.000	43.0003.023	43.0003.033
S	18.0 - 19.8 l/min at 3 bar	yellow	40.0004.000	40.0004.023	40.0004.033	--	--	--
B	22.8 - 25.2 l/min at 3 bar	dark blue	40.0005.000	40.0005.023	40.0005.033	43.0005.000	43.0005.023	43.0005.033
C	27.0 - 30.0 l/min at 3 bar	dark grey	40.0006.000	40.0006.023	40.0006.033	--	--	--
D	34.8 - 37.8 l/min at 3 bar	light grey	40.0007.000	40.0007.023	40.0007.033	--	--	--
T	1.5 gpm max at 60 psi	green	40.0010.000	40.0010.023	40.0010.033	--	--	--
X	2.2 gpm max at 60 psi	red	40.0001.000	40.0001.023	40.0001.033	43.0001.000	43.0001.023	43.0001.033

## PCA® Models

	Flow Rate	Colour Code	STD Insert	Female M22x1	Male M24x1	TJ Insert	Female M19x1	Male M20x1
	1.0 gpm max.	blue	40.0058.000	40.0058.023	40.0058.033	43.0031.000	43.0031.023	43.0031.033
	1.25 gpm max.	pink	40.0060.000	40.0060.023	40.0060.033	-	-	-
5.0 l/min		orange	40.0051.000	40.0051.023	40.0051.033	-	-	-
	1.5 gpm max.	green	40.0056.000	40.0056.023	40.0056.033	43.0032.000	43.0032.023	43.0032.033
6.0 l/min		black	40.0052.000	40.0052.023	40.0052.033	-	-	-
	1.75 gpm max.	light blue	40.0061.000	40.0061.023	40.0061.033	43.0039.000	43.0039.023	43.0039.033
7.0 l/min		light green	40.0055.000	40.0055.023	40.0055.033	-	-	-
	2.0 gpm max.	lilac	40.0057.000	40.0057.023	40.0057.033	43.0033.000	43.0033.023	43.0033.033
	2.2 gpm max.	yellow	40.0053.000	40.0053.023	40.0053.033	43.0034.000	43.0034.023	43.0034.033
8.0 l/min		white	40.0054.000	40.0054.023	40.0054.033	-	-	-

## TF Size Models with Restrictor

	Flow Rate	Colour Code	TF Insert	Male M28x1
B	22.8 - 25.2 l/min at 3 bar	dark blue	41.0005.000	41.0005.093
C	27.0 - 30.0 l/min at 3 bar	dark grey	41.0006.000	41.0006.093
D	34.8 - 37.8 l/min at 3 bar	light grey	41.0007.000	41.0007.093
M	60.0 - 70.0 l/min at 3 bar	grey	41.0009.000	41.0009.093

# NEOPERL® CASCADE® Aerators



flow, stop and go®

- ▶ great lime protection
- ▶ extended life
- ▶ very low noise level
- ▶ damage proof: unlike conventional wire mesh screens, the CASCADE® structure can not be crushed
- ▶ integrated anti-clogging dome screen filters sediments and particles
- ▶ perfect stream quality even under difficult flow conditions



## Models with Restrictor

	Flow Rate	Colour Code	STD Insert	Female M22x1	Male M24x1	TF Insert	Male M28x1
Z	7.5 -9.0 l/min at 3 bar	light green	40.1002.000	40.1002.023	40.1002.033	-	-
A	13.5 - 15.0 l/min at 3 bar	light blue	40.1003.000	40.1003.023	40.1003.033	-	-
S	18.0 - 19.8 l/min at 3 bar	yellow	40.1004.000	40.1004.023	40.1004.033	-	-
B	22.8 - 25.2 l/min at 3 bar	dark blue	40.1005.000	40.1005.023	40.1005.033	41.1005.000	41.1005.093
C	27.0 - 30.0 l/min at 3 bar	dark grey	40.1006.000	40.1006.023	40.1006.033	41.1006.000	41.1006.093
D	34.8 - 37.8 l/min at 3 bar	light grey	40.1007.000	40.1007.023	40.1007.033	41.1007.000	41.1007.093
X	2.2 gpm max at 60 psi	red	40.1001.000	40.1001.023	40.1001.033	-	-

## PCA® Models

	Flow Rate	Colour Code	STD Insert	Female M22x1	Male M24x1
	1.0 gpm max.	blue	40.1058.000	40.1058.023	40.1058.033
	1.25 gpm max.	pink	40.1060.000	40.1060.023	40.1060.033
5.0 l/min		orange	40.1051.000	40.1051.023	40.1051.033
	1.5 gpm max.	green	40.1056.000	40.1056.023	40.1056.033
	1.75 gpm max.	light blue	40.1061.000	40.1061.023	40.1061.033
7.0 l/min		light green	40.1055.000	40.1055.023	40.1055.033
	2.0 gpm max.	lilac	40.1057.000	40.1057.023	40.1057.033
	2.2 gpm max.	yellow	40.1053.000	40.1053.023	40.1053.033
8.0 l/min		white	40.1054.000	40.1054.023	40.1054.033

## Approvals

For an updated list of approvals and copies of the original certificates, please refer to our website at [www.neoperl.net](http://www.neoperl.net)



# PERLATOR® HONEYCOMB®

NEOPERL®

## Aerator

flow, stop and go®



### Models with Restrictor

	Flow Rate	Colour Code	TT Size	TJ Size	JR Size	STD Size	TF Size
Z	7.5 - 9.0 l/min at 3 bar	light green	-	43.2002.000	-	40.2002.000	-
A	13.5 - 15.0 l/min at 3 bar	light blue	-	43.2003.000	-	40.2003.000	-
S	18.0 - 19.8 l/min at 3 bar	yellow	-	-	-	40.2004.000	-
B	22.8 - 25.2 l/min at 3 bar	dark blue	-	43.2005.000	-	40.2005.000	41.2005.000
C	27.0 - 30.0 l/min at 3 bar	dark grey	-	-	-	40.2006.000	41.2006.000
D	34.8 - 37.8 l/min at 3 bar	light grey	-	-	-	40.2007.000	41.2007.000
G	60.0 - 70.0 l/min at 1 bar	orange	-	-	-	-	41.2008.000
M	60.0 - 70.0 l/min at 3 bar	grey	-	-	-	-	41.2009.000
	1.0 gpm max at 60 psi	ivory	44.3031.000	-	42.3031.000	40.3031.000	-
T	1.5 gpm max at 60 psi	green	44.3032.000	-	42.3032.000	40.2010.000	-
	1.75 gpm max at 60 psi	brown	-	-	42.3039.000	40.3039.000	-
	2.0 gpm max at 60 psi	olive	-	-	42.3033.000	40.3033.000	-
X	2.2 gpm max at 60 psi	red	44.3034.000	43.2001.000	42.3034.000	40.2001.000	-
	3.0 gpm max at 60 psi	beige	-	-	-	40.3035.000	-
	3.5 gpm max at 60 psi	black	-	-	-	40.3036.000	-
W	4.0 gpm max at 60 psi // 7.5 l/min at 1 bar	pink	-	-	42.3037.000	40.3037.000	-
Y	4.5 gpm max at 60 psi // 7.5 l/min at 1 bar	lilac	-	-	42.3038.000	40.3038.000	-
V	aerated, maximum flow	blue	44.3030.000	43.3030.000	42.3030.000	40.3030.000	-

### PCA® Models

	Flow Rate	Colour Code	TT Size	TJ Size	JR Size	STD Size
	1.0 gpm max	blue	44.3058.000	-	42.3058.000	40.2058.000
	1.25 gpm max	pink	44.3060.000	-	42.3060.000	40.2060.000
5.0 l/min		orange	44.3051.000	43.2051.000	-	40.2051.000
	1.5 gpm max	green	44.3056.000	43.2056.000	42.3056.000	40.2056.000
	1.75 gpm max	light blue	44.3061.000	43.2061.000	42.3061.000	40.2061.000
7.0 l/min		light green	44.3055.000	43.2055.000	-	40.2055.000
	2.0 gpm max	lilac	44.3057.000	43.2057.000	42.3057.000	40.2057.000
	2.2 gpm max	yellow	44.3053.000	43.2053.000	42.3053.000	40.2053.000
8.0 l/min		white	44.3054.000	43.2054.000	-	40.2054.000

### Approvals

For an updated list of approvals and copies of the original certificates, please refer to our website at [www.neoperl.net](http://www.neoperl.net).

# PERLATOR® HONEYCOMB®

## Laminar

NEOPERL®

flow, stop and go®

- ▶ improved lime protection: integrated HONEYCOMB® structure replaces conventional wire mesh screens prone to lime build-up
- ▶ extended life
- ▶ perfect stream quality even under difficult flow conditions
- ▶ very low noise level
- ▶ damage proof: unlike conventional wire mesh screens, the HONEYCOMB® structure cannot be crushed
- ▶ integrated anti-clogging dome screen filters sediments and particles



Models with Restrictor					
	Flow Rate	Colour Code	TT Size	JR Size	STD Size
Z	7.5 - 9.0 l/min at 3 bar	light green	-	-	40.2102.000
A	13.5 - 15.0 l/min at 3 bar	light blue	-	-	40.2103.000
S	18.0 - 19.8 l/min at 3 bar	yellow	-	-	40.2104.000
B	22.8 - 25.2 l/min at 3 bar	dark blue	-	-	40.2105.000
C	27.0 - 30.0 l/min at 3 bar	dark grey	-	-	40.2106.000
D	34.8 - 37.8 l/min at 3 bar	light grey	-	-	40.2107.000
	1.0 gpm max at 60 psi	ivory	-	42.3131.000	-
T	1.5 gpm max at 60 psi	green	44.3132.000	42.3132.000	40.2110.000
	1.75 gpm max at 60 psi	brown	-	42.3139.000	-
	2.0 gpm max at 60 psi	olive	-	42.3133.000	-
X	2.2 gpm max at 60 psi	red	44.3134.000	42.3134.000	40.2101.000
W	4.0 gpm max at 60 psi// 7.5 l/min at 1 bar	pink	-	42.3137.000	-
Y	4.5 gpm max at 60 psi// 7.5 l/min at 1 bar	lilac	-	42.3138.000	-
V	maximum flow	blue	44.3130.000	42.3130.000	-

PCA® Models					
	Flow Rate	Colour Code	TT Size	JR Size	STD Size
	1.0 gpm max	blue	44.3158.000	42.3158.000	40.2158.000
	1.25 gpm max	pink	44.3160.000	42.3160.000	40.2160.000
5.0 l/min		orange	44.3151.000	-	40.2151.000
	1.5 gpm max	green	44.3156.000	42.3156.000	40.2156.000
	1.75 gpm max	light blue	44.3161.000	42.3161.000	40.2161.000
7.0 l/min		light green	44.3155.000	-	40.2155.000
	2.0 gpm max	lilac	44.3157.000	42.3157.000	40.2157.000
	2.2 gpm max	yellow	44.3153.000	42.3153.000	40.2153.000
8.0 l/min		white	44.3154.000	-	40.2154.000

# NEOPERL® Rectangular Aerators

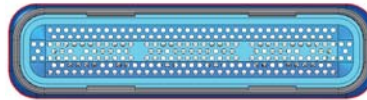


flow, stop and go®

With rectangular aerators NEOPERL has changed the shape of the water streaming from a faucet. Faucet designers experience new possibilities and interesting style options for faucet and water stream. Two patterns are possible: laminar and aerated.



## Models with rounded sealing (PL-RC)



Aerated Models PL-RC with rounded sealing			
Size		Recommended Flow Rate	Art. No.
Small	24 x 6 mm	4 l/min*	02.3282.0
Medium	28 x 7 mm	6 l/min*	02.3284.0
Large	32 x 8 mm	7 l/min*	02.3280.0
	32 x 8 mm	V	02.3245.0
X-Large	40 x 10 mm	A	02.3259.0
	40 x 10 mm	B	02.3260.0
	40 x 10 mm	C	02.3261.0
	40 x 10 mm	V	02.3246.0
Special Sizes		Recommended Flow Rate	Art. No.
Small	24.5 x 9 mm	6 l/min*	02.3289.0
Laminar Models FS-RC with rounded sealing			
Size		Recommended Flow Rate	Art. No.
Small	24 x 6 mm	5 l/min*	02.3281.0
Medium	28 x 7 mm	6 l/min*	02.3295.0
Large	32 x 8 mm	6 l/min*	02.3296.0
Special Sizes		Recommended Flow Rate	Art. No.
X-Large basin	38 x 12 mm	6 l/min*	02.3293.0
X-Large TF	38 x 12 mm	20 l/min*	02.3288.0

\* Rectangular flow straighteners are only suitable for low pressure applications or in combination with a pressure reducing upstream flow regulator.

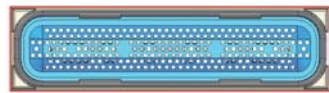
For recommended mounting dimensions, please refer to the NEOPERL website:  
<http://www.neoperl.net/en/oem/products/aerators/productlines/rectangular>

# NEOPERL® Rectangular Aerators



flow, stop and go®

## Models for rectangular / sharp edge spouts (PL-RC-RS)

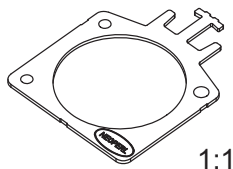


Aerated Models PL-RC-RS with sharp edge			
Size		Flow Rate	Art. No.
Small	24 x 6 mm	4 l/min*	02.3250.0
Medium	28 x 7 mm	6 l/min*	02.3251.0
Large	32 x 8 mm	7 l/min*	02.3252.0
	32 x 8 mm	V	02.3256.0
X-Large	40 x 10 mm	A	02.3253.0
	40 x 10 mm	B	02.3254.0
	40 x 10 mm	C	02.3255.0
	40 x 10 mm	V	02.3257.0

### Assembly of aerated PERLATOR RC:

The aerated PERLATOR RC is being locked into position by means of a screw (not included in delivery)

For removal a special key is required:



### Assembly of laminar models (FS-RC):

The flow straightener is fixed and sealed by press fit of the thermoplastic lip seal at the discharge end -> no screw necessary

# SLIM Air Aerators



flow, stop and go®

- ▶ Extremely low height combined with an excellent aerated stream quality
- ▶ Innovative integration of the water saving PCA® technology
- ▶ Compliance with different international water saving requirements
- ▶ Compatible with existing male faucet threads M24x1

<b>HONEYCOMB®</b>			
Flow Rate		Colour Code	Male M24x1
PCA® 5.0 l/min		orange	40.8351.010
	PCA® 1.5 gpm max.	green	40.8356.010
PCA® 7.0 l/min		light green	40.8355.010
	PCA® 2.2 gpm max.	yellow	40.8353.010
PCA® 8.0 l/min		white	40.8354.010
V	aerated, max. flow	blue	40.8330.010



<b>SSR</b>			
Flow Rate		Colour Code	Male M24x1
PCA® 5.0 l/min		orange	40.8051.010
	PCA® 1.5 gpm max.	green	40.8056.010
PCA® 7.0 l/min		light green	40.8055.010
	PCA® 2.0 gpm max.	lilac	40.8057.010
	PCA® 2.2 gpm max.	yellow	40.8053.010
PCA® 8.0 l/min		white	40.8054.010
V	aerated, max. flow	blue	40.8030.010



<b>CASCADE® SLC</b>			
Flow Rate		Colour Code	Male M24x1
PCA® 5.0 l/min		orange	40.8451.010
	PCA® 1.5 gpm max.	green	40.8456.010
PCA® 7.0 l/min		light green	40.8455.010
	PCA® 2.2 gpm max.	yellow	40.8453.010
PCA® 8.0 l/min		white	40.8454.010
V	aerated, max. flow	blue	40.8430.010



<b>CASCADE® SLC SSR</b>			
Flow Rate		Colour Code	Male M24x1
PCA® 5.0 l/min		orange	40.8151.010
	PCA® 1.5 gpm max.	green	40.8156.010
PCA® 7.0 l/min		light green	40.8155.010
	PCA® 2.0 gpm max.	lilac	40.8157.010
	PCA® 2.2 gpm max.	yellow	40.8153.010
PCA® 8.0 l/min		white	40.8154.010
V	aerated, max. flow	blue	40.8130.010



# SSR Aerators

with adjustable stream direction



flow, stop and go®

There are instances where wash basin and faucet outlet are not in proportion and therefore the water stream angle is not ideal or you get splash. The SSR aerator allows the stream direction to be adjusted to hit the ideal point without having to replace faucet or basin.



STD Size Models with Restrictor					
Flow Rate		Colour Code	STD Insert	Female M22x1	Male M24x1
Z	7.5 - 9.0 l/min at 3 bar	light green	40.6002.000	40.6002.023	40.6002.033
A	13.5 - 15.0 l/min at 3 bar	light blue	40.6003.000	40.6003.023	40.6003.033
S	18.0 - 19.8 l/min at 3 bar	yellow	40.6004.000	40.6004.023	40.6004.033
B	22.8 - 25.2 l/min at 3 bar	dark blue	40.6005.000	40.6005.023	40.6005.033
C	27.0 - 30.0 l/min at 3 bar	dark grey	40.6006.000	40.6006.023	40.6006.033
D	34.8 - 37.8 l/min at 3 bar	light grey	40.6007.000	40.6007.023	40.6007.033
X	2.2 gpm max. at 60 psi	red	40.6001.000	40.6001.023	40.6001.033

PCA® Models					
Flow Rate		Colour Code	STD Insert	Female M22x1	Male M24x1
5.0 l/min		orange	40.6051.000	40.6051.023	40.6051.033
	1.5 gpm max.	green	40.6056.000	40.6056.023	40.6056.033
	1.75 gpm max.	light blue	40.6061.000	40.6061.023	40.6061.033
7.0 l/min		light green	40.6055.000	40.6055.023	40.6055.033
	2.0 gpm max.	lilac	40.6057.000	40.6057.023	40.6057.033
	2.2 gpm max.	yellow	40.6053.000	40.6053.023	40.6053.033
8.0 l/min		white	40.6054.000	40.6054.023	40.6054.033

TJ Size Models with Restrictor					
Flow Rate		Colour Code	TJ Insert	Female M19x1	Male M20x1
Z	7.5 - 9.0 l/min at 3 bar	light green	43.6002.000	43.6002.023	43.6002.033
A	13.5 - 15.0 l/min at 3 bar	light blue	43.6003.000	43.6003.023	43.6003.033
B	22.8 - 25.2 l/min at 3 bar	dark blue	43.6005.000	43.6005.023	43.6005.033
X	2.2 gpm max at 60 psi	red	43.6001.000	43.6001.023	43.6001.033

PCA® Models					
Flow Rate		Colour Code	TJ Insert	Female M19x1	Male M20x1
5.0 l/min		orange	43.6051.000	43.6051.023	43.6051.033
	1.5 gpm max.	green	43.6056.000	43.6056.023	43.6056.033
	1.75 gpm max.	light blue	43.6061.000	43.6061.023	43.6061.033
7.0 l/min		light green	43.6055.000	43.6055.023	43.6055.033
	2.0 gpm max.	lilac	43.6057.000	43.6057.023	43.6057.033
	2.2 gpm max.	yellow	43.6053.000	43.6053.023	43.6053.033
8.0 l/min		white	43.6054.000	43.6054.023	43.6054.033

# AC Aerator

## Auto Clean aerator



flow, stop and go®

- ▶ the AC aerator with its auto-cleaning function flushes out sediments and particles up to 0.7 mm
- ▶ „Heavy duty“ HONEYCOMB version available for particles up to 2 mm



- ▶ no changes in stream pattern or flow rate even after a long period of use
- ▶ CACHÉ® versions available on request

### CASCADE® AC Models with Restrictor

	Flow Rate	Colour Code	STD Insert
Z	7.5 -9.0 l/min at 3 bar	light green	40.1402.000
A	13.5 - 15.0 l/min at 3 bar	light blue	40.1403.000

### PCA® Models

	Flow Rate	Colour Code	STD Insert
	5.0 l/min	orange	40.1451.000
	1.5 gpm max	green	40.1456.000
	1.75 gpm max	light blue	40.1461.000
	7.0 l/min	light green	40.1455.000
	2.0 gpm max	lilac	40.1457.000
	2.2 gpm max	yellow	40.1453.000

### CASCADE® SLC AC Models with Restrictor smart lime cleaning

	Flow Rate	Colour Code	STD Insert
Z	7.5 -9.0 l/min at 3 bar	light green	40.0402.000
A	13.5 - 15.0 l/min at 3 bar	light blue	40.0403.000

### PCA® Models

	Flow Rate	Colour Code	STD Insert
	5.0 l/min	orange	40.0451.000
	1.5 gpm max	green	40.0456.000
	1.75 gpm max	light blue	40.0461.000
	7.0 l/min	light green	40.0455.000
	2.0 gpm max	lilac	40.0457.000
	2.2 gpm max	yellow	40.0453.000

### PERLATOR® HONEYCOMB AC Models with Restrictor

	Flow Rate	Colour Code	STD Insert
Z	7.5 -9.0 l/min at 3 bar	light green	40.2402.000
A	13.5 - 15.0 l/min at 3 bar	light blue	40.2403.000
V	6.0 gpm max at 60 psi	blue	40.3430.000

### PCA® Models

	Flow Rate	Colour Code	STD Insert
	5.0 l/min	orange	40.2451.000
	1.5 gpm max	green	40.2456.000
	1.75 gpm max	light blue	40.2461.000
	7.0 l/min	light green	40.2455.000
	2.0 gpm max	lilac	40.2457.000
	2.2 gpm max	yellow	40.2453.000

### PERLATOR® HONEYCOMB AC SSR adjustable stream direction

	Flow Rate	Colour Code	STD Insert
Z	7.5 -9.0 l/min at 3 bar	light green	40.1402.000
A	13.5 - 15.0 l/min at 3 bar	light blue	40.1403.000
V	6.0 gpm max at 60 psi	blue	40.6430.000

## Approvals

For an updated list of approvals and copies of the original certificates, please refer to our website at [www.neoperl.net](http://www.neoperl.net)

# CACHÉ® Coin Slot Aerator

NEOPERL®

flow, stop and go®

- ▶ No key - Just take a coin to assemble or disassemble (no additional cost for a key)
- ▶ Fully compatible - no change to existing bore specifications: you can replace all CACHÉ® aerators with the Coin Slot version



## Models with Restrictor

Flow Rate		Colour Code	M16,5x1 (TT)	M18,5x1 (TJ)	M21,5x1 (JR)	M24x1 (STD)
Z	7.5 - 9.0 l/min at 3 bar	light green	--	43.2202.450	42.2202.450	40.2202.450
A	13.5 - 15.0 l/min at 3 bar	light blue	--	43.2203.450	42.2203.450	40.2203.450
B	22.8 - 25.2 l/min at 3 bar	dark blue	--	43.2205.450	42.2205.450	40.2205.450
C	27.0 - 30.0 l/min at 3 bar	dark grey	--	--	--	40.2206.450
D	34.8 - 37.8 l/min at 3 bar	light grey	--	--	--	40.2207.450
	1.0 gpm max. at 60 psi	ivory	44.3231.450	--	--	40.3231.450
T	1.5 gpm max. at 60 psi	green	44.3232.450	--	42.3232.450	40.3232.450
X	2.2 gpm max. at 60 psi	red	44.3234.450	43.2201.450	42.2201.450	40.2201.450
V	aerated, max. flow	blue	44.3230.450	43.3230.450	42.3230.450	40.3230.450

## PCA® Models

Flow Rate		Colour Code	M16,5x1 (TT)	M18,5x1 (TJ)	M21,5x1 (JR)	M24x1 (STD)
	1.0 gpm max.**	blue	44.3258.450	--	--	40.2258.450
	1.25 gpm max.**	pink	44.3260.450	--	--	40.2260.450
5.0 l/min*		orange	44.3251.450	43.2251.450	42.2251.450	40.2251.450
	1.5 gpm max.**	green	44.3256.450	43.2256.450	42.2256.450	40.2256.450
	1.75 gpm max.**	light blue	44.3261.450	43.2261.450	42.2261.450	40.2261.450
7.0 l/min*		light green	44.3255.450	43.2255.450	42.2255.450	40.2255.450
	2.0 gpm max.**	lilac	44.3257.450	43.2257.450	42.2257.450	40.2257.450
	2.2 gpm max.**	yellow	44.3253.450	43.2253.450	42.2253.450	40.2253.450
8.0 l/min*		white	44.3254.450	43.2254.450	42.2254.450	40.2254.450

## Approvals

For an updated list of approvals and copies of the original certificates, please refer to our website at [www.neoperl.net](http://www.neoperl.net)

\*\* max. flow

\* nominal flow

06/2012



# PERLATOR® Coin Slot Aerator

Threaded aerator with integrated Coin Slot



flow, stop and go®

- ▶ No key - Just take a coin to assemble or disassemble (no additional cost for a key)
- ▶ No brass - The brass housing becomes redundant, reducing material costs with no need for special finishes



## M24x1 Thread (STD) with Restrictor

	Flow Rate	Colour Code	Male M24x1
Z	7.5 -9.0 l/min at 3 bar	light green	45.2002.000
A	13.5 - 15.0 l/min at 3 bar	light blue	45.2003.000
B	22.8-25.2 l/min at 3 bar	dark blue	45.2005.000
C	27.0-30.0 l/min at 3 bar	dark grey	45.2006.000
V	aerated, max. flow	blue	45.3030.000

## PCA® Models

	Flow Rate	Colour Code	Male M24x1
5.0 l/min*		orange	45.2051.000
	1.5 gpm max.**	green	45.2056.000
7.0 l/min*		light green	45.2055.000
	1.75 gpm max.**	light blue	45.2061.000
	2.0 gpm max.**	lilac	45.2057.000
	2.2 gpm max.**	yellow	45.2053.000
8.0 l/min*		white	45.2054.000

## US Thread JR Male 13/16-27 with Restrictor

	Flow Rate	Colour Code	Male 13/16-27 UNS-2A
V	aerated, max. flow	blue	45.3030.220

## PCA® Models

	Flow Rate	Colour Code	Male 13/16-27 UNS-2A
	1.5 gpm max.**	green	45.2056.220
	1.75 gpm max.**	light blue	45.2061.220
	2.2 gpm max.**	yellow	45.2053.220

## M24x1 Thread (STD) with laminar flow

	Flow Rate	Colour Code	Male M24x1
	laminar, max. flow	white	45.2100.000

\*\* max. flow

\* nominal flow

06/2012



## 1/2" PCW-01 Washer Regulator

The 1/2" PCW-01 washer regulator is a washer with dual function: flow regulating and sealing. This water saving element is easy to install and therefore perfect for retrofit. It can be inserted into any female thread 1/2" such as a shower hose where it replaces the conventional washer.

Design patents are registered.

**NEOPERL®**

flow, stop and go®

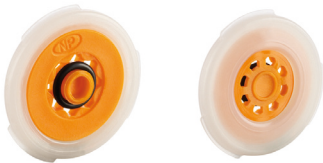
# NEOPERL® 1/2" PCW-01 Washer Regulator



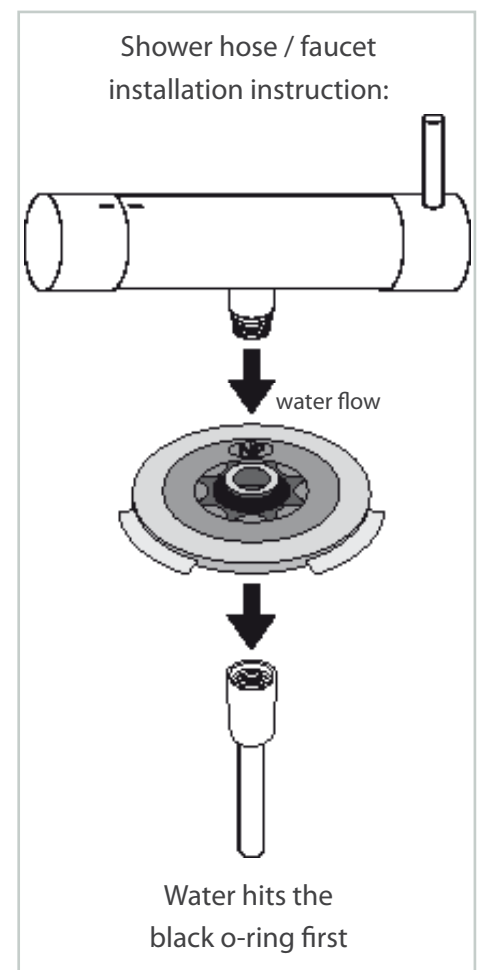
flow, stop and go®

An innovative combination

- ▶ dual function washer: flow regulating and sealing
- ▶ convenient way to save water and energy in the shower
- ▶ retaining tabs for secure positioning
- ▶ available in various flow rates



PCW-01 1/2" Models			
Flow rate	Colour of the washer regulator	Article number	Elastomer Colour*
0.5 gpm	lime	58.8643.1	white
1.0 gpm	dark blue	58.8644.1	white
1.5 gpm	green	58.8645.1	white
1.75 gpm	light blue	58.8646.1	white
2.0 gpm	lilac	58.8647.1	white
2.2 gpm	yellow	58.8648.1	white
2.5 gpm	dark grey	58.8649.1	white
2.0 l/min	olive	58.8632.1	grey
3.0 l/min	brown	58.8633.1	grey
4.0 l/min	dark grey	58.8634.1	grey
5.0 l/min	yellow	58.8635.1	grey
6.0 l/min	black	58.8636.1	grey
7.0 l/min	light green	58.8637.1	grey
8.0 l/min	natural	58.8638.1	grey
9.0 l/min	orange	58.8639.1	grey
10.0 l/min	light blue	58.8640.1	grey
11.0 l/min	brown	58.8641.1	grey





## PCW-02 Washer Regulator

The PCW-02 washer regulator is a washer with dual function: sealing and flow regulating. Its flexible turbine for secure positioning fits in various tube diameters.

Typical applications are 1/2" shower handles, bib and pillar taps (male thread); these units can easily be equipped with the flexible silicone adapter before installation.

**NEOPERL®**

flow, stop and go®

# NEOPERL® 1/2" PCW-02 Washer Regulator

NEOPERL®

flow, stop and go®

## An innovative combination

- ▶ dual function washer: flow regulating and sealing
- ▶ WATER SAVING – a convenient and inexpensive way to save water and energy
- ▶ HIDDEN INSIDE – invisible from the outside
- ▶ EASY ASSEMBLY – in any 1/2" male thread; perfect for retrofit



PCW-02 1/2" Models			
Flow rate	Colour of the flow regulator	Article number	Elastomer Colour
1.0 gpm	● dark blue	58.9170.1	white
1.5 gpm	● green	58.9171.1	white
1.75 gpm	● light blue	58.9172.1	white
2.0 gpm	● lilac	58.9173.1	white
2.2 gpm	● yellow	58.9174.1	white
2.5 gpm	● dark grey	58.9175.1	white
2.0 l/min	● olive	58.9085.1	grey
4.0 l/min	● dark grey	58.9086.1	grey
5.0 l/min	● yellow	58.9087.1	grey
6.0 l/min	● black	58.9088.1	grey
7.0 l/min	● light green	58.9089.1	grey
8.0 l/min	● white	58.9090.1	grey
9.0 l/min	● orange	58.9091.1	grey
10.0 l/min	● light blue	58.9092.1	grey
12.0 l/min	● red	58.9094.1	grey

